

The Chappel & Wakes Colne

# Village Reporter



September to November 2022 Issue no. 114

Your free magazine for local news, information and forthcoming events in the Parishes of Wakes Colne & Chappel



Paintings and drawings of Chappel & Wakes Colne by year 5 & 6 children at Chappel C of E Primary School

The Village Reporter is compiled, edited and delivered by volunteers and is wholly funded through revenue from advertisers. Anyone wishing to submit an article for publication can contact Mandy Sexton on 07729236253 or email: [mandymsexton@hotmail.co.uk](mailto:mandymsexton@hotmail.co.uk)

Press date for the December 2022 to February 2023 issue - Monday 21st November 2022

#### LOCAL INFORMATION

Earls Colne Surgery:	Appointments 01787 222022
Bures Surgery	Appointments 01787 227529
County Councillor	Lewis Barber 0787 6237137
Police Colchester Station	01245 491491 (non emerg. 101 emerg. 999)
Chappel C of E School	Head Teacher Julie Ingram 01787 222296
Churches: COE	Richard Bareham Tel. 01206 210799
Chappel URC	Rev. Kenneth N Forbes 01206 547920
Wakes Colne Post Office	01787 222449
National Rail Enquiries	03457 4849 50
Citizens Advice Bureau	0800 144 8848
Childline	0800 1111
Samaritans	116 123
Chappel Parish Council	Clerk: Ms. Helen Cook 01206 589095
Chappel Website	www.chappel.org
Chappel Chairperson	Cllr. Sue Chamley sue.chamley@chappel.org
Wakes Colne Parish Council	Clerk: Ms. Diane Jacob 07508787869
Wakes Colne Chairperson	Cllr. Monica Taylor
Wakes Colne Website	www.wakescolne.org
East Anglian Railway Museum	Peter Martin 01206 242524
Royal British Legion (Ladies)	Val Sayer 01206 240328
Women's Institute	Neris Roberts 01787 223855
Village Hall	Francesca Mead francescamead@live.com
Village Hall Bookings Clerk	Christine Underwood 0794 9510523

#### VILLAGE REPORTER NEWS

As of this issue the Village Reporter will be printed every three months instead of bimonthly. This is due to the steep rise in printing costs. We feel it is more important to keep the 12 page, A4 format of the magazine rather than charge more for adverts to cover the present printing costs. Having four issues instead of six a year will allow the magazine to continue to share the news in Chappel and Wakes Colne in its usual informative way. Thank you for your support.

If you are interested in being added to the Village Reporter mailing list, please sign up on the website, where you can also view past issues of the magazine, find local information and forthcoming events, view the gallery of photographs taken by villagers and have an opportunity to send in your stories and questions to share.

<https://www.chappelandwakescolnevillagereporter.com/> The website has been kindly produced and will be regularly updated by Charlie Sexton

#### DIGITAL ACCESS TRAINING

I have just taken over from Peter Chillingworth as Councillor for the Rural North Ward with special responsibility for Mount Bures, Wakes Colne, Chappel and Great Tey.

I have been trying to organise some Digital Access Training in the villages. It is open to a wide range of skill levels, from those who struggle with the basics through to those wanting to polish their higher level skills. You will be asked to fill in a questionnaire to indicate where you would like to focus to be.

The training is delivered by Colchester's Digital Access team in the form of eight Friday morning sessions from 10.30am to 12.30pm. But we need 10 people to sign up and so far we only have 8. I can offer a suitable meeting room at East Gores Farm CO6 1RZ if that is what works best.

If you are interested please contact me at

William.sunnucks@colchester.gov.uk and I will push things along. Please also think whether you have any neighbours that would benefit - some people suffer from significant isolation due their lack of computing skills, and they can be hard to find.

William Sunnucks

## Love singing?

"I wish it could be Christmas every day"



Learn this yuletide favourite in fabulous 4-part harmony with Chorus Solo  
3 FREE workshops in November 2022  
Great Bromley Village Hall, near Colchester



By the way, you will also improve your singing technique, your performance skills and make new friends - what's not to like?

Contact chonicki@iceni.com  
or chonicki@iceni.org.uk  
for more information and to reserve your place

#### ADVERTISING IN THE VILLAGE REPORTER

Let over 500 homes know Your business!!

£65 for 1/8 of a page or £100 for 1/4 of a page,  
for one year (4 issues).

For further information please email: mandymsexton@hotmail.co.uk

Thank you for supporting your local community

## Introducing...

## The quality all-in-one temperature control system

Increased comfort & smaller energy bills

**GET A QUOTE TODAY**



Not only are our systems kind to the environment, they also cost up to 75% less to run than conventional electric heating.



## Save Money on your Heating From 1kW of Electricity, Receive 4kW of Heating

Air Source Heat Pumps for Economical Heating and Cooling

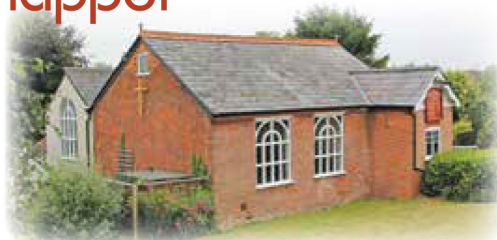
- ❖ Super Quiet Fan – Ideal For The Home & Workplace
- ❖ Impeccable Service – From Initial Survey Through To Installation
- ❖ Full 5 Year Parts & Labour Warranty
- ❖ Essex Trading Standards Approved
- ❖ No Obligation Survey & Quotation
- ❖ Competitive Pricing, Friendly & Reliable

If you would like more information please contact us on 01787 220202 or email us at [info@i-ht.co.uk](mailto:info@i-ht.co.uk)

Unit 14a, Wakes Hall Business Centre, Colchester Road, Wakes Colne, Colchester, Essex, CO6 2DY [www.airconinstallation-uk.com](http://www.airconinstallation-uk.com)







## The Minister writes ...

IT'S BEEN quite a spectacular summer. The hottest July on record and, in our part of the country, no rain at all for many weeks as I write this. This, coupled with constant warnings about Global Warming, and frequent news from other parts of the world of severe, unusual, and often disastrous climatic conditions, makes us realise just how dependent we are on the weather. Dependent not just for our comfort and wellbeing, but for our very survival; and dependent not just on the weather, but on the whole delicately-balanced eco-system of the planet earth.

In days gone by, in times of primitive folk religion, there was a very direct link between the climate and a tribe's

god or gods. A poor harvest caused by drought was a sign of the gods' displeasure, as was flood, lightning-strike or epidemic. Gods had to be flattered and bribed in order that they would smile on their people and keep them safe and well fed. Failure to do so could result in quite disastrous punishments.

As with many primitive beliefs and practices, there is a grain of common sense there. The God worshipped by the Christian Church today is not seen to demand flattery and bribery; natural disasters are generally not attributed to the anger of God. Yet it is true to say that our natural environment responds to our treatment of it. Constant

exploitation of natural resources, reckless pollution of water and atmosphere, runaway deforestation and dependence on fossil fuels are all bound to have a damaging effect on the planet, creating ever more hazardous habitats for human, animal and plant life.

I believe that the Christian gospel of love and care extends not just to people but to all of creation, and that we are called not only to look after each other but our environment as well; to safeguard our environment as best we can, so that the wonder and beauty of God's creation may be preserved for our own safety and enjoyment, and discovered by future generations to be, not a hollowed-out ruined shell, barely habitable, but a place of beauty and abundance.

*Ken*

## Preachers in September, October and November

on Sundays at 6.30pm

### SEPTEMBER

- 4 Rev'd Lythan Nevard  
**Moderator, Eastern Synod**
- 11 William Glasse
- 18 Rev'd Ken Forbes  
**Harvest Festival**
- 25 Richard Austing

### OCTOBER

- 2 Rev'd Neil Coulson *Baptist*
- 9 Rev'd Ken Forbes
- 16 Rev'd Mark Payne *Anglian*
- 23 Rev'd Anthony Bushell *Anglian*
- 30 Rev'd Charles Martin

### NOVEMBER

- 6 William Glasse
- 13 Rev'd Dr Martin Camroux
- 20 Rev'd Ken Forbes
- 27 Richard Austing

**Lines from a modern hymn** by Shirley Erena Murray (b.1931) in New Zealand

Touch the earth lightly,  
use the earth gently,  
nourish the life of the  
world in our care:  
gift of great wonder,  
ours to surrender,  
trust for the children  
tomorrow will bear.

Let there be greening,  
birth from the burning,  
water that blesses and air  
that is sweet,  
health in God's garden,  
hope in God's children,  
regeneration that peace  
will complete.

God of all living,  
God of all loving,  
God of the seedling, the  
snow, and the sun,  
teach us, deflect us,  
Christ reconnect us,  
using us gently and  
making us one.

## News in Brief ...

**SUMMER PICNIC** was held in idyllic weather and over twenty people enjoyed a relaxed evening in the garden at 'Maynhoods', Wakes Colne, the home of Trudie Creswell. **£232 was raised for Church funds.**

**British RED CROSS** received £134 from our recent monthly Communion additional Offertories.

## Harvest Festival Service

Sunday, 18 September at 6.30pm

led by our Minister the  
Rev'd Ken Forbes

All  
Welcome



## Quiz Evening with Cheese and Wine

**VILLAGE HALL**  
**Saturday 8 October**

Cost £5 • Raffle • Open to everyone

Please let Tony Percival know in  
advance 01206 240442  
[arpchapel@btinternet.com](mailto:arpchapel@btinternet.com)

*A Social Evening for  
everyone to enjoy*

## Monthly mid-week activities at the Chapel

All are welcome to join  
with us

**First Wednesday 10.30am**

**Coffee and Chat** informal, no  
charge

**Second Thursday 10.30am**

**Study and Discussion Group**



St. Barnabas Church, Chappel



THE CHURCH  
OF ENGLAND



All Saints Church, Wakes Colne

Treasurer: Richard Bareham Tel. 01206 210799 Email: richdcb@aol.com  
PCC Member – Christine Maskell Tel: 01206 241261 Email: lbriar@aol.com

Dear Reader,

As I am writing this piece, I am surrounded by farmland with beautiful fields being harvested, the farmers working tirelessly to get their crops combined and stored for the winter. It is a time of celebration, an age-old tradition since pagan times. We will be celebrating our HARVEST FESTIVAL on Sunday October 2nd at CHAPPEL church at 10am. Our church will be decorated with fruits from the fields and hedgerows, garden produce and autumnal flowers just as it has done in ages past. We bring offerings to church of fruit vegetables and dry goods, which will be donated to a worthy cause so please come and celebrate with us; you would be made extremely welcome. It has to be one of my most favourite services of the year, a time to give thanks for God's faithfulness and bounty all around us, as is promised in Genesis 8:22.... "While the earth remains, seedtime and harvest, cold and heat, summer and winter, day and night will never cease". We are so very fortunate to live in such an amazingly beautiful place, away from war and repression. We live here peacefully, in a tranquil haven, with nature and wildlife at every turn and harvest is a time to give grateful thanks to God for all he has created and entrusted us to care for in our lifetime, for future generations to embrace and enjoy. I came across this short poem, which I thought I would like to share with you.....

With my very good wishes and God's blessings to you all

Christine Maskell

Thanksgiving (anon)

The year has turned its circle,  
The seasons come and go,  
The harvest all is gathered in  
And chilly North winds blow.  
Orchards have shared their treasures,  
The fields, their yellow grain,  
So open wide God's doorway  
Thanksgiving comes again!



A month later in addition to our normal services, we will be holding a special service of REMEMBRANCE on Sunday, November 13th at 10.55am. This is being held at WAKES COLNE church, please come, all those Servicemen who died for our country need to be remembered for sacrificing their lives for their countrymen. There will also be a short ceremony after the service where a wreath will be laid by the seat opposite Chris's shop on the crossroads. I have now set up a timetable of services for the months of September, October and November below for your information, hopefully we may see you there.

**September 4th**

Morning service at Wakes Colne led by Rev Ian Scott-Thompson

**September 25th**

Holy Communion at Chappel church led by Rev Ian Scott-Thompson

**October 2nd**

Harvest festival Chappel church details above

**October 23rd**

Holy Communion at Wakes Colne church  
(preacher to be arranged)

**October 30th**

No service in Benefice as it is a fifth Sunday

**November 6th**

Morning service at Chappel church with Rev Ian Scott-Thompson

**November 13th**

REMEMBRANCE service 10.55am (preacher to be arranged) this will be the last service in the year for Wakes Colne church before winter closure

**November 27th**

Holy Communion at Chappel church led by Rev Ian Scott-Thompson

All the above services will be held at 10am on Sundays, the only change will be Remembrance Sunday, which will take place at 10.55am for the two minutes silence.

We welcome the new Rector of Chappel and Wakes Colne Churches Ian Scott-Thompson and his wife Jane. Ian was licensed on 29th June by the Bishop of Colchester





## **CHAPPEL AND WAKES COLNE** **WOMENS INSTITUTE**

Way back in July we were back to nature with a lovely presentation by Roger Hance entitled Wild Flowers of the British Isles. Roger illustrated his talk with wonderful pictures – many flowers were very common to us all but when photographed in close detail they are very beautiful. We were all surprised how many wild orchids exist in the UK – some have very odd peculiarities! Like the Birds Nest orchid which contains no chlorophyll so it is completely colourless and its roots are so matted they resemble a birds nest – hence the name would you believe it! Bluebells are another flower we in the UK take for granted but we have three quarters of the world's bluebells here as they are not found in many other countries – what an interesting fact. Another interesting fact was that most wild flowers whose name ends in "wort" are usually used in medicine like the Woodwort which was used in days gone by to clot blood in wounds.

In the middle of August, by kind invitation of Jane and Colin Partington, we had a very interesting tour of their beautiful home. Due to torrential rain the planned garden tour decamped into the house where we had our indoor picnic followed by a totally absorbing talk by John the Bee Man who looks after Jane's bees. I must share some interesting facts with you without being too boring. Firstly all flying bees are females and the only use male bees have is to fertilize the queen – after doing their duty they are evicted from the hive as they would eat too much food through the winter which is for the queen, the females and grubs. When the grubs hatch they have to clean the hive, they then become nurse bees. After two and half weeks they become soldier bees helping to guard the hive against predators such as wasps who eat the honey and grubs. In approximately four weeks they go into the wild world and become nectar gatherers. When a hive becomes too crowded that is when they divide and create a swarm which must have a queen otherwise they would not survive. Sometimes a queen will not be up to scratch and not lay enough eggs so the other bees get rid of her and replace her with another from within the hive. A beehive is such a well organized complex place full of rules which all the bees seem to obey, they all have their jobs – completely fascinating and where would we be without them

In September we have a fun evening entitled "If you don't use it lose it" with Karen Lawire who will do chair based exercises to music – this is on 21<sup>st</sup> September.

October 19<sup>th</sup> will be on Climate change with Jill Bruce our WI Ambassador then on November 16<sup>th</sup> will be a presentation called Food and Diet Related with Jo Johnson.

All meetings at the village hall at 7.30 with refreshments provided – we would love to see you.

**Dorothyb.crees@googlemail.com**



Parish Clerk: Mrs D. Jacob  
5 Crocklands  
Greenstead Green  
Halstead  
Essex  
CO9 1QY  
Tel: 07508787869  
parishclerk@wakescolne.org

### **MEMORIES OF WAKES COLNE AND CHAPPEL**

**You are invited to a gathering, with refreshments, to share some memories and to start an oral history project**

**Village Hall, Wednesday 14<sup>th</sup> September, 2.30-4.00 pm**

**ALL WELCOME, especially long-standing village residents**

**For catering purposes please contact Parish Clerk if you would like to attend**

## **Bee Lines**

### **The Colour of Honey**

As summer reaches its peak, so the bees' preparations for winter approach their conclusion and the beekeeper intervenes in their endeavours to claim his(or her) share of the honey harvest. It is time to extract some honey.

This has been a season unlike any other. Previously unprecedented high temperatures have combined with record low rainfall to produce a unique situation. How have the bees dealt with these unusual circumstances, and what effect, if any, will it have on the final honey yield?

This summer, I have extracted honey over three sessions, firstly in late June, secondly in mid July and finally in early August. Unfortunately, two of these occasions corresponded with daytime temperatures around forty degrees centigrade; believe me, it gets very hot in a bee suit under those conditions.

The bees store their honey in frames in boxes known as supers, with ten frames to each super. Each completed frame holds about two pounds of honey, meaning a full super, with honey, frames and box itself weighs in at around thirty pounds.

To harvest the honey, the supers have firstly to be cleared of bees.

This is achieved by fitting one way bee valves to the supers, enabling the inhabitants to leave the box but not return. These valves are fitted a few days before extraction, so hopefully all of the bees will have gone before the supers are removed.

On extraction day, as early as possible if the weather is hot, the supers are removed and checked for residual bees; those remaining being gently brushed off the frames. It is important that all of the bees are removed as the last thing needed is large numbers of bees flying around the extraction area making a nuisance of themselves.

Each frame of honey will have been capped; sealed with wax by the bees. This is evidence that the honey is "ripe", and the water content is sufficiently low that the honey will store well and not ferment in the jars. The capping's are removed by melting them away with a hot air gun, and the uncapped frames are placed in the extraction centrifuge. The centrifuge spins out the honey, whilst preserving the comb within the frames for re-use. A series of filters then remove any residual wax, bee parts and other detritus, leaving the pure honey ready for jarring up and labelling ready for use. There are many potential pitfalls in the process, and as usual, most things that can go wrong will do so on a regular basis at the most inconvenient of times, but eventually the process is completed.

This year, despite the unusual conditions has been very good for yield. I had worried that the drought would give problems for nectar flow, but an abundance of local borage more than compensated for the rather unusual weather.

The other surprise was in the variety of honeys produced.

The honey on the left is almost transparent. It has the characteristics



of pure borage honey, although pollen analysis would be required to prove the assumption. It is very light and sweet. It was extracted in early August, just as the borage was being harvested.

On the right, the much darker honey was extracted just as the borage was beginning to flower,

and therefore contains little or no borage nectar. It is a stronger, more complex tasting honey, and probably contains nectars from several sources, including sweet chestnut, blackberry and dandelion, as well as from a large variety of garden shrubs and flowers.

We are now expecting the last major nectar flow of the season, from ivy in the autumn. I usually leave the ivy honey for the bees, but this year I am tempted to try for a few jars, just for the novelty value; for ivy honey is jet black in colour, and quite bitter to the taste, although it is said to mellow slightly on storage. I have seen it at honey shows but never tasted any. I am up for the challenge!

**Your bee correspondent, The Old Drone**

## CHAPPEL & WAKES COLNE VILLAGE HALL

On Saturday, 15<sup>th</sup> October at 7.30p.m real professional live theatre comes to our Village Hall!

Yes - we have a splendid evening of entertainment right on our very own doorsteps and we do hope you will come along, enjoy yourselves and support this worthy venture!

An excursion into the weird and wonderful mind of Edgar Allan Poe is sure to fascinate and delight. 'The Raven' offers glimpses of a remarkable and innovative artist's life in his own words and those of his critics, contemporaries and friends in a cabaret style production using film and original music.

The ingenious and skilful Common Ground Theatre Company will be certain to make this one of the most memorable shows of the year.

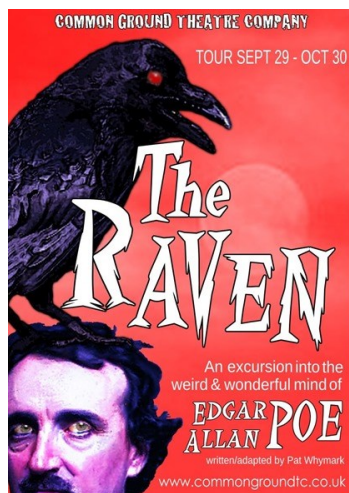
The Company is based in Ipswich and was founded in 2007 by Pat Wymark and Julian Harries. They created a new small-scale venture of live, entertaining theatre with character-based productions on a shoestring budget using inventive and original ideas.

It is not surprising that they have been steadily touring, mainly East Anglia, ever since, producing eighteen new plays and receiving stunning reviews here and in London.

Julian's acting career is impressive. Besides working with the Royal Shakespeare Company and the Royal National Theatre, he has appeared in Eastenders, Detectorists, Spies of Warsaw, Doctors and numerous West End productions.

You will almost certainly want to join the ever-growing audiences who always keep a lookout for the next show! Their Christmas 2022 Tour this year is a classic Christmas Comedy mystery - 'Hercule Poudrot Investigates a Murder at St. Muttleys'. Venues are online, but with enough enthusiasm, we may be able to tempt them to come back to our very own Village Hall!

Visit [www.commongroundtc.co.uk](http://www.commongroundtc.co.uk) to find out more and to book tickets online for 'The Raven' or 'phone: 07807-341-364.



## CHAPPEL C OF E PRIMARY SCHOOL

We ended the academic year in July with many of our traditional events. It was so lovely to be as close to "normal" as we have been for the past three years. We have had a range of issues to deal with due to Covid, but we have come through and we were all ready for a lovely summer break.

The production of Alice was one of the highlights of the year, with stunning singing both from the chorus but also our solo singers. Thank you to all the staff, children, and parents for helping make the production such a success.

Our Year 6 Leaver's assembly was a real treat with memories of events reminding us of how far our children have come from the nervous four-year-olds to the confident young people they are today. We wish them every success and happiness at their new schools. I am sure they will be great successes and look forward to hearing about them as they progress through school.

Our End of Year service was a celebration of the year, and all the children took part with enthusiasm. It was lovely to welcome our new Rector, Ian Scott Thompson to the service. I look forward to working with him in the coming year. Ian Scott Thompson was able to hand out Bibles to our Year 6 leavers. We also presented awards to the following children: -

The sporting cup went to Darcy Atkins

The Music cup went to Robyn Heap

The Kindness Cup went to Alice Goodchild

The Les Sayer Award was presented to Blake Ricketts by Val Sayer (right: photo)

It is always emotional to send our children into the wider world, however I know they will be great successes in all that they do.

We also said farewell to Mrs Dunn and Mrs Hansen, both of whom are taking some time out from school. Mrs Hansen's baby arrived in the middle of the holidays and we cannot wait to meet her. Congratulations to Mr and Mrs Hansen on the safe arrival of baby Ada. Mrs Dunn is taking some time with her family and will hopefully pop into school to help when we need her. I want to say a huge thank you to both for all their hard work and support.

As I write this my thoughts are turning to the start of a new academic year, with new children joining us across the school. I am hoping that this year will be as near to normal as we can expect, and certainly not as disrupted as the past three years have been.

Teachers have been in school preparing their classrooms and I have been updating the school website. Please do look at [www.chappel.essex.sch.uk](http://www.chappel.essex.sch.uk)

The Governing Body are looking to recruit a range of Governors, from Foundation (church related) through to Community and CO-Opted Governors. This is a very rewarding role, particularly at this time as we look to formalise our working arrangement with Fordham All Saints C of E (VC) Primary School. If you have time to spare, an interest in shaping the education of our future generations and a willingness to learn new skills please do contact the school office.

It seems that we just settle in our new children when parents are starting to look for a suitable school for their children to start in September 2023. Chappel has a nurturing ethos with the aim of giving your child the best possible start to their lifelong learning journey. If you have a child who will be four by 1<sup>st</sup> September 2023 please do consider sending them to their local school.

If you would like to send your child to our lovely school, please do not hesitate to contact Mrs Bull in the office for more details on any spaces 01787 222296.

**Julie Ingram, Executive Headteacher**



### Funding for community & environmental projects in the Colchester area

#### Enovert Community Trust (ECT) can help fund your community project

It can give you money through a scheme called the Landfill Communities Fund. ECT would like organisations who have projects in the Colchester area to apply. Projects should be within a 10 mile radius of Enovert's Bellhouse landfill site at Stanway. Its postcode is CO3 0NN.

#### ECT funds projects that help improve, protect, provide and/or maintain public amenities

This can be land or a building, such as playgrounds, sports clubs, leisure facilities, communal gardens and more.

#### We also fund projects that protect the environment, conserve or promote biological diversity

Your project might encourage wildlife, increase pollinating insects, develop wild meadows or help manage woodlands.

#### Applying is easy

ECT has a Trust Manager that can advise you on what can be funded and the information you will need.

You might be a sports club, leisure centre, church, village hall, local authority, parish council.

**We would love to hear about your project**

**Visit: <http://www.enovertct.org>**

**Then call Angela Haymonds, Trust Manager  
01753 582513**







Chappel and Wakes Colne OPEN GARDENS made a return this year after a 5-year holiday. A total of 14 gardens were very kindly opened to visitors by residents. These all contributed to providing an interesting mix ranging from the fabulous re-wilding project at Jordans Farm to more traditional, flowering gardens at Jankes House and Oak Farm – both of which also participate in the National Garden Scheme during the year. In addition, we thank Tony Percival for making the United Reform Church accessible for visitors to

view the Church interior and make use of the facilities.

The Village Hall was chosen to be where this year's event would start from. We thought this would be beneficial to all visitors and volunteers by having kitchen and toilet facilities on-site, along with shelter from the elements (whatever they would be on the day). As luck would have it, the weather was just perfect with lovely sunshine.

By selling programmes at the village hall, this enabled us to offer more attractions for visitors by having stalls selling lots of goodies. Apart from refreshments and cakes, we had plant, tombola and cake stands which were all stocked high by our lovely villagers and friends via donations and baking. There were also some visiting craft and artisan makers with their goods on offer - local Busy Bees honey; chocolates; paper goods; textile gifts and fused glass items.

The hall was buzzing and the gardens were busy with just over 200 programmes being sold. All in all, it was a fabulous success and are absolutely delighted to have raised just over £2,000 for the fabric fund for the two churches', All Saints and St Barnabas.

Of course we are extremely proud ..... however, none of this would have been possible without the fabulous volunteers who gave up their time to help in so many, many ways – either in pre-event activities or on the actual day. Not forgetting of course, our wonderful Villagers who agreed to open their gardens and to all the Visitors for coming.

And we hope to do it all again next year on **Sunday 25<sup>th</sup> June 2023**. Don't forget to pop it in your diary and please do let me know if you might be interested in opening your garden next year or indeed happy to volunteer to help in some-way.

THANK YOU to everyone.!

Denise Stocker, [denise.stocker@woodbre.co.uk](mailto:denise.stocker@woodbre.co.uk)



### Exhibition of Work by Local Artists Organised by Colne Valley Art Group Wakes Colne Village Hall Saturday, 24th September 10.30 am to 5.00 pm



All welcome, entry to view the exhibition free  
Exhibition entries from non-members welcome.

Entries £1 per item, no commission on sales.  
Entries from children 12 and under free

Please contact Peter Chillingworth for entry details:  
01206 240230 or [peter.chillingworth@btinternet.com](mailto:peter.chillingworth@btinternet.com)

### Ambling Arthritics



We enjoyed our first walk together ambling around the Millennium Green, across to Popes Lane and down to Oak Rd, where we admired the view, and down across the field and back another route via the viaduct and playing fields. Commemorative photo above. We were joined by friends from Ipswich and Stanstead.

Our second walk with one or two new AAs, was along the riverbank to Aldham (2.5mls in 1.5hrs to give you an idea of the speed of our amble), where most enjoyed lunch at the Shoulder of Mutton before using our bus passes to return.

We meet fortnightly 10.30am outside the PO, with the next walks for about 1.5 hrs being on 2nd, 16<sup>th</sup> and 30<sup>th</sup> September. Dogs can be brought on leads if well behaved. Walks are at your own risk. Please contact Monica Taylor (01787 223425) if you would like to join us.

### BRITISH LEGION

The Remembrance Service is on Sunday 13th November at 10.55am, at Wakes Colne Church. The wreath presented during the service will be laid by the Oak tree on the green, opposite the post office at approximately 11.45am. Hope you can attend. Poppies will be on sale from October. They can be purchased from the Post Office, The Swan and the school. Thank you for your support.

Please contact Val Sayer for details tel: 01206 240328

## Help Available to Cope with the Cost of Living, Energy and Climate Crises

Essex County Council are running a scheme until June 2023 to help entire parishes install local community renewable energy schemes. Both Chappel and Wakes Parish Councils have expressed interest in learning more, and there may be an invitation to a Public Meeting in the Village Hall in October or November for everyone interested. My understanding is that residents and landowners can offer space for roof or ground mounted solar panels, and space for batteries, and/or interest in investing money into a project that could offer cheaper greener energy for everyone in our villages. From what I've learnt so far it seems as if even those without space or funds could benefit, and I definitely want to hear more.

Local renewable energy schemes can save a lot of money, as well as cutting the carbon emissions that are causing more frequent and extreme weather events here in Essex. I remember being told 50 years ago that global warming would mean Essex would warm by 1C or 2C, and it would be lovely. We now have 1.2C warming, and it would be nice to stop now, because we weren't warned that it would just keep on getting hotter, and that would drive storms and floods as well as droughts and heatwaves. We had our solar panels and batteries installed because I worry so much about the extreme weather events that are coming our way, but it has really paid off for us financially. We are fortunate that we had the space and savings available to install 28 solar panels and 12.8kw battery storage, which meant that in May for our all electric home and my all electric car our electricity bill was £25.41, including driving 965 miles, in June £26.79, I drove 1250 miles, and in July £22.04, including driving 711 miles.

I've been delighted to receive a number of emails from Chappel and Wakes Colne residents who are also installing solar panels and batteries, but not everyone has enough roof space or funds to do this now, when it is most needed, so Essex County Council's offer is very timely. They can help us attract external investment, but I think the more funds we raise ourselves, the cheaper the electricity will be. We may be able to access lottery funding, but following an earlier article on climate change in the Village Reporter I've been contacted by the Enovert Community Trust with regard to potential funding to help towards our proposed community energy scheme. They are offering grants for community projects within 10 miles of the landfill site at Stanway. They go out to Halstead, so we fall into their catchment area, and I've been assured that funding for a proposed solar and battery storage project in community buildings would fall within their remit. More details of their grants below.

Finally, I'm delighted that Alok Sharma, President of COP26, the huge UN Climate Conference of the Parties held in Glasgow last year, has kindly agreed to speak and take questions at our Hot Debate 6 zoom with our MP, Sir Bernard Jenkin, 7pm-9.15pm Thursday 29th September. This is a free event, just go online to Eventbrite and search for Hot Debate 6 to register. It is a great opportunity to put questions to the man who is still COP President, till Egypt take over the Presidency in November, who is still asking world leaders to put policies in place to cut their countries emissions. Other speakers will talk on how we can improve the energy efficiency of our homes, on our proposed community energy scheme, and on other community energy schemes from around the country.

Please let me know if you'd like further information on Hot Debate 6, or if you'd like to be notified if and when the date for the public meeting in the village hall is confirmed.

**Jill Bruce, Climate Ambassador**  
Chappel and Wakes Colne WI [jillbruce321@gmail.com](mailto:jillbruce321@gmail.com)



## Enovert Community Trust announces funding for Colchester community projects

Enovert Community Trust (ECT) has funding available to help make community projects across the Colchester area a reality. It is keen to let communities know about the funding opportunity and held a public meeting at Colchester and East Essex Cricket Club recently. ECT funds community projects through the Landfill Communities Fund (LCF). This funding is derived from landfill tax charged at waste management sites when waste is landfilled. The funds derived from Enovert's Bellhouse Landfill Site at Stanway are available for community projects within a ten mile radius of the site as the crow flies. This includes Stoke by Nayland in the North, Frating Green in the East, West Mersea in the south, and Halstead in the West.

The Trust is keen to see many more applications for project funding from the Colchester community in the future. ECT Trust Manager, Angela Haymonds, was at the meeting to explain the application process. "We would like to see applications for projects that improve and maintain public amenities. Also projects that protect the environment, preserve heritage, and promote biodiversity. Examples of these include refurbishing roofs on village halls through to maintaining woodland and funding improvements at sports clubs," said Angela.

The funding application is designed to be easy to complete. "The project must meet LCF qualifying criteria. These are clearly set out on the ECT website and its also worth a call before making an application and I can discuss your plans. The website also shows you timings for submitting applications on future funding rounds," advises Angela.

ENTRUST is the regulator of the Landfill Communities Fund. CEO, Chris Welford, was present at the public meeting. He said: "This is an important fund that is making a difference to communities across England. The public meeting was attended by representatives from over 50 community groups across the area. I hope many more hear about the LCF and apply for funding through the scheme."

For more information or to arrange an interview, please contact David Kidby, Acer Marketing Communications, on 01952 221281 or email [David@acercomms.co.uk](mailto:David@acercomms.co.uk)

**Enovert Community Trust funds community projects within 10 miles of Landfill sites operated by Enovert. Funding application details can be found on the ECT website at <https://www.enovertct.org>**  
**Community projects must meet one of the five following criteria to qualify:**

- A** – Opening up access for the public to an area of land that has been closed or partially closed up to now.
- B** – Cleaning up land that has been polluted because of now ceased activity.
- D** – Helping to improve, protect, provide and/or maintain land or a building as a public amenity.
- DA** – Protecting the environment, and conserving or promoting biological diversity.
- E** – Helping to preserve, maintain, restore and/or repair a religious building or one of historical or architectural interest.

PROFESSIONAL DOG GROOMING

**PET STATION**

TEL. 07971 373790

Services provided by Rachel,  
a professional and qualified Pet Groomer  
and Veterinary Nurse with over  
20 years' experience

## SERVICES PROVIDED

- Bathing
- Clipping
- Hand stripping
- Brushing out
- Scissoring
- De-matting
- De-shedding
- Nail clipping
- Anal glands
- Puppy practice groom
- Pre-surgery bath (help reduce post-operative infections)
- Cats, Rabbits, Guinea Pigs and other small animals catered for

Please call to discuss your pet's individual needs (services listed are not exhaustive)

ALBECQ, STATION RD,  
WAKES COLNE, ESSEX, CO6 2DS



## Nature notes August 2022

Water companies are a headline issue this summer. Don't use hosepipes and don't swim in the sea is the message from many of them, and there are widespread complaints about under investment in reservoirs and sewerage treatment plant on the one hand, and generous executive salaries and dividends to shareholders on the other.

Oddly, given East Anglia is the driest part of the UK, we've not had a hosepipe ban. Or not oddly. It's been widely reported that no new reservoir has been built in the UK for 20 years. Strictly speaking that's true, but not true if a reservoir expansion is included. Almost 10 years ago, the Abberton expansion project was finished. By raising the water level some 3 metres, capacity was increased nearly 60% from 26 to 41 billion litres. To put that in perspective, the next new reservoir in the country will be Havant Thicket near Portsmouth, but comparatively that will be a tiddler at 8.7 billion litres and won't be helping drought management until it is operating in 2029.

Several things come to mind here. First, reservoirs take a long time to plan, approve and build. The Abberton expansion took over 20 years from first planning to construction and filling. However, secondly, expansion of an existing facility ought to be easier than a completely new build. Thirdly, if done well an excellent amenity is created.

In my view, we're the beneficiaries of what looks like a good piece of planning. At Abberton, the pre-expansion visitors centre went under the water, and the new replacement one, on a higher bluff, is very good. The veranda means you can birdwatch over a lot of water while having coffee and cake. From it last year I sat and saw a distant Osprey. The eastern causeway road was flooded, and the new one has excellent parking and viewing. There are several new hides and walkways and the tree planting is now beginning to look like a wood.

The birds seem to approve too. Last year a pair of Spoonbills bred, the first time in Essex for a few hundred years, and they were back this year for a repeat. The big heronry is just off the western causeway and you don't really need to get out of the car to see the birds. Mostly Little Egrets and Grey Herons, but the Spoonbills are in there too as are some Cattle Egrets, just beginning to spread now as Little Egrets did 10-15 years ago. It's as good as say the Camargue in southern France. In a mid-August visit, I saw 10 Spoonbills there, plus a single grumpy looking Cattle Egret and a dozen Great White Egrets. Something spooked them and the Spoonbills took off with a couple of hundred Lapwings before settling back on a mud bank exposed by the lower water levels. The spook was not evident, but it was not the Spitfire in Russian markings doing some aerobatics over the far end of the reservoir.

Birds need water, and it has been mostly recently fledged Blue and Great Tits on the garden bird bath drinking and splashing around. But not just them: there has also been a Coal Tit, a couple of Goldfinches and also a few times one Nuthatch. Overhead, there have been daily Buzzards, an occasional soaring Sparrowhawk, and every other day a Red Kite.

Butterflies started the summer well. The garden had several Commas, certainly more than in previous years, and several Large Skippers. The question of would the Purple Hairstreak reappear in the oaks near the veg patch came around again, and the answer for the third-year running was yes. I had four doing their spiral mock fighting flight, but generally it was harder to see them this year as they were less active. Perhaps it was the heat that made them fly less in the evenings. As the hot July went on and on, in general the butterflies seemed less numerous than in previous years.

By contracts, dragonflies have been numerous. We've had several of the large Brown Hawkers around, one even ending up in the house clinging to a curtain, and once an Emperor on a post in the veg patch.

Several people in the village have reported Hummingbird Hawk-Moths. Resembling a giant bee, these wonderful day-flying moths are mostly migrants from the continent and do behave like a hummingbird as they dart around and stop to feed on the flowers borders and hanging baskets. Red valerian seems to be a favoured flower.

**Tony Witcher**

References: <https://web.archive.org/web/20210121140839/https://www.tononline.co.uk/features/project-focus-abberton-reservoir-enlargement>  
<https://planetradio.co.uk/greatest-hits/norfolk/news/new-reservoir-norfolk/>



ESTABLISHED IN 1951, WE ARE AN  
INDEPENDENT FAMILY RUN FIRM OF  
PROPERTY PROFESSIONALS,  
SPECIALISING IN PROPERTY SALES,  
LETTINGS AND MANAGEMENT.

*Looking to Sell or Rent?  
Contact us now for a  
FREE Market Appraisal*

WWW.PERCIVALANDCOMPANY.CO.UK  
EARLS COLNE@PERCIVALANDCOMPANY.CO.UK  
HIGH STREET, EARLS COLNE  
01787 223879

Specialists in quality printing & design



**Stationery • Leaflets  
Magazines • Brochures  
Banners • Order of Services**

T: 01245 450554 • E: [Info@barham-print.co.uk](mailto:Info@barham-print.co.uk)  
8B Wakes Hall Business Centre, Colchester Road,  
Wakes Colne, Colchester, Essex CO6 2DY  
W: [barham-print.co.uk](http://barham-print.co.uk)

## Finding your way: October-December sky guideposts

Look first to the south and west. There you will see the three bright stars of the Summer Triangle slowly setting. Altair is to the south; the brilliant blue one further north, nearest the horizon, is Vega; and a bit higher overhead is Deneb. Deneb is at the top of a collection of stars in the form of a cross, standing almost upright between Vega and Altair during this time of the year.

High overhead are the four stars of the Great Square of Pegasus. Although they are not particularly brilliant, they stand out because they are brighter than any other stars near them. The square is lined up so that its sides are aligned north-south and east-west.

South of the Square, the skies are nearly barren of stars. There is one very bright star, called Fomalhaut (pronounced something like "foam a lot"), low to the south. If you see any other bright object to its north, it is probably a planet.

North of the Great Square, you'll see the five main stars of Cassiopeia making a bright "W" shape (or an "M" depending on your point of view). It will be visible even as far south as Brazil.

A string of second-magnitude stars runs from the northeast corner of the Great Square in a line south of Cassiopeia; that's the constellation of Andromeda.

The Milky Way runs through Cassiopeia and continues across the northern horizon. It's nice just to scan your telescope through Cassiopeia and Perseus at random, not looking for any object in particular.

To the east, you'll see the "winter" stars begin to make their appearance. Look for a little cluster of stars called the Pleiades otherwise known as the Seven Sisters.

East and south of the Pleiades is the reddish star Aldebaran; north of the Pleiades, the brilliant star Capella rises. It is a magnitude-zero star, a match for Vega in the west.

Along the horizon, the bright stars of Orion, Betelgeuse and Rigel, and the Twins will be just rising. It is worth staying up a bit later in the evening if you can, and try to get an early look at some of the best of the Winter objects to be found there.

During this time of year, Ursa Major or the Plough can be hard to find even in northern climes because it lies right along the northern horizon during the evening. Any trees or buildings there, or even just haze in the sky, may obscure it from view until the wee hours of the morning.

Peter E: [peterdwillett@gmail.com](mailto:peterdwillett@gmail.com)

### C&WC CSW REPORT

Firstly I would like to thank AND CONGRATULATE – Chris Woolmore who has completed his CSW on-line training as our new recruit. Chris and his wife have just moved into Chappel and live along the A1124, a notorious "speeding area". Chris read the CSW article in last time's Village Reporter and telephoned me. Brilliant – a new volunteer - WELCOME CHRIS.

We are always looking for more volunteers, training given On-Line, no cost and you could make a considerable difference to helping to slow down speeding motorists. We all have commitments but if you can spare an hour a week to help us, this would enable us to do more shifts and thus remind motorists of the 30mph restricted speed limit throughout our two villages. AND make our two villages safer for all of us. How about it? If you are interested, please call me on 01787 220 147 for further details. Thank you.

Chris did his first shift with Brenda on Station Road, Wakes Colne and in a short period they logged seven drivers exceeding the speed limit – one, a Porsche, driving UP Station Road was recorded at 55mph!!! 55mph on

this extremely narrow lane, no white line, short footpath, is extremely dangerous, and unnecessary, especially in a 30mph restricted area.

It amazes me with the cost of fuel how folk can afford to "hit the gas" and speed as we all know the faster you go the more fuel you use, these drivers must have more money than sense. Not only that, how would anyone who lost a loved one due to speeding, and often dangerous driving, feel seeing excessive speeds day in and day out. Death is final, there's no coming back.

I've now received the figures from Essex Police for July 2022. Fortunately "Deaths" on Essex roads appear to be keeping low, but "Serious Injuries" [which are very serious, not just a cut or bruise] appear to be on the increase. Mobile 'phone incidents are rising as are "Seatbelt Offences" – increase in number of letters sent to offending motorists who have been logged on 'CSW Warning Letters' and the "Extra Eyes Submission" – (Extra eyes submission - where members of the public send in Dash Cam footage of offences - from minor traffic to dangerous driving.)

I'd like to thank Lewis Barber, our ECC Cllr, for all his help and determination in our attempts to get Vehicle Activated Signs for our two villages. Lewis came out with Brenda and me and carried out an early morning shift at the end of July – 07:36 to 08:18, recording 18 vehicles being driven between 36 and 30mph and five being driven at 40mph plus. Without his input we would not be at the stage we are, which is still "dealing with bureaucracy" - but, as the old adage says: "softly, softly catchee monkey" – let's hope we have given sufficient information to enable this to come to fruition. Why do important things like road safety take so long to achieve??

From June 2016 to August 2022, bearing in mind no shifts were executed during two years of Covid restrictions, we have, with a very small number of volunteers, carried out 164 shifts resulting in CSW H/Q being given information on 1,601 vehicles being driven between 36 and 39mph ~ 599 vehicles being driven at 40mph plus.

Patrick Dent, C&WC CSW co-ordinator – 01787 220 147



## Richard Fordham

Tree Surgeons Ltd



Rumps Barn  
Dowling Road  
Mount Bures  
Suffolk  
CO8 5AY

Tel: 01787 229933

Mobile: 07860 510517

Free Estimates

- Tree Surgery
- Tree Felling
- Pruning of Trees, Hedges and Shrubs
- Removal of Dead / Dying / Dangerous Trees
- Stump Grinding / Removal
- Hedge Management
- Wood Chippings Delivered Locally
- Logs Delivered Locally
- Reliable and Courteous Staff



Fully Insured - £10 Million Insurance cover





## Need some help around the house or garden?

From regular gardening to that indoor job you never get around to, I could be what you're looking for. With skills in house and garden maintenance.

**Call or text me for a chat  
about your needs.**

**Graham King**  
**T: 07923 445128**



Are you  
looking  
for a high-  
quality  
online  
butcher?

Look no  
further!



- The best quality local produce delivered directly to your door.
- Working with our farming partners ensures all of our produce is from high animal welfare, fully sustainable farms with quality at the forefront of everything they do.
- Discover products you wouldn't find in your average butcher shop.

[www.directmeats-foodstore.co.uk](http://www.directmeats-foodstore.co.uk)



### Parish Councillor Vacancy

Your Parish Council needs you! Do you want to be a voice for your community? This is your opportunity to become a Parish Councillor to work towards improving community wellbeing and providing better services at a local level.

Please contact the Clerk for further information or come along to our next meeting on the 12<sup>th</sup> September to find out more.

### Speed Watch – Volunteers Needed

If you could spare some time, the Speed Watch Team are looking for more volunteers. Please contact the Parish Clerk so we can put you in touch with the co-ordinator Cllr Dent.

### Blocked Road Drains

The Parish Council has been exploring the costs of jet washing some of the drains on the Highway. Sadly the quotes received were too high especially as this would not be a one off cost and therefore continue to report these to Essex Highways. If you spot any issues on the Highway network these can be reported directly: <https://www.essexhighways.org/tell-us>

### VAS Sign

The Parish Council continues to liaise with Essex Highways in order source a suitable location, before applying for funding. Further updates should be available after the September meeting.

### Parish Council

Our next meetings are due to be held on the 12<sup>th</sup> September, 10<sup>th</sup> October and 14<sup>th</sup> November. These meetings will be held in the Village Hall starting at 7.30pm.

If you would like an issue raised, but would rather not attend a Public Meeting, please feel free to email the Parish Clerk.

The Agenda and Approved Minutes of all meetings are placed on the Parish Council Noticeboard and also on our Parish Council website [www.chappel.org](http://www.chappel.org)

If you have something to report and you're not sure who to report it to, please feel free to contact me and I will be happy to report the problem to the right authorities on your behalf. Please email the Parish Council with as much detail and if possible photographs to [parishclerk@chappel.org](mailto:parishclerk@chappel.org)

**Contact details: Website: [www.chappel.org](http://www.chappel.org)**  
**Chappel Parish Council <https://www.facebook.com/ChappelPC/>**  
**Chairman: Sue Chamley Email: [sue.chamley@chappel.org](mailto:sue.chamley@chappel.org)**  
**Clerk: Helen Cook Email: [parishclerk@chappel.org](mailto:parishclerk@chappel.org)**  
**Tel: 01206589095**



### Cycle Security

Cycle security is always an issue with thefts from a variety of locations including the town centre, residential areas, and educational establishments. Commonly bicycles are either not secured or not secured properly, and this makes it easy for thieves.

Where do they go? Number of places: - in a container abroad, to another part of the country, stored in premises or sold as either a cycle or cycle parts via the internet, or third parties.

By taking some appropriate precautions and using good quality security products, and using them well, should help you to keep your property safe. Use the best security you can afford. Don't secure a £2,000 bicycle with a £20 lock! As a guide look to spend 10-15% of the value of the item on its security. Look for a "Sold Secure" certified chain and padlock or "D – Lock" preferably gold rated but certainly not below silver. Consider what you chain it to whether at home or whilst out, is that secure? Is it well overlooked to provide good natural surveillance?

Make a note of the frame number, security mark the cycle, there are a number of different methods available such as [www.bikeregister.com](http://www.bikeregister.com), or see Secured by Design accredited products. Take a photograph of the cycle and any areas of damage or marks of identification, and some insurance companies may require one with the owner in the picture with it.

At home remove that first attraction to the thief or burglar: 1) don't leave garage doors open for long periods showing your expensive cycle and other property, 2) consider a "Ground anchor" or "Shed shackle" within your shed or garage to secure your cycle to, 3) look at your shed or garages security and ensure you have good locks and that the hinges are protected, 4) consider a shed alarm, 5) if your home is limited for space outside consider a cycle storage unit, they are smaller than a shed.

If you can its worth getting your children or grandchildren into good habits, keeping their bikes secure and not leaving them discarded on the front lawn or other, may save problems in the future.

**Check with your insurance company to see what security standards they require for your insurance cover to be valid.** For suitable security products see [www.securedbydesign.com](http://www.securedbydesign.com) or [www.soldsecure.com](http://www.soldsecure.com).





## LOOKING AFTER YOUR LEGAL NEEDS



For you and  
your family



For your  
business



International  
Services



Ellisons Financial  
Planning

01206 764477

enquiries@ellisonssolicitors.com

Headgate Court, Head Street, Colchester, CO1 1NP

www.ellisonssolicitors.com

Colchester | Ipswich | Chelmsford | Bury St Edmunds | Tending



Lexcel  
Law Society Accredited

Proud Member of  
Alliott Global Alliance

LEGAL  
500

Ellisons Solicitors is authorised and regulated by the Solicitors Regulation Authority SRA Number 49336



Visit by appointment, the remaining 2/3 bedroom houses available for sale Freehold and exclusively for the over 55s.

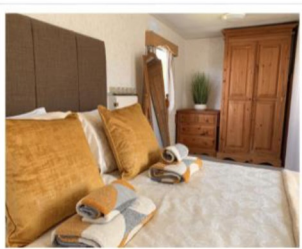
\*Maintained private parkland \*Gym \*Tennis courts \*Potager gardens.

"Designed to fit your lifestyle without comprising luxury, privacy and control of your life."

NP NICHOLAS  
PERCIVAL

Call: 01206 563222 or visit: www.wakeshallpark.co.uk  
Wakes Hall Park, Colchester Road, Wakes Colne, Colchester, CO6 2FH

Check out our holiday home on Airbnb  
[www.airbnb.com/h/greenacres-goldfinch](http://www.airbnb.com/h/greenacres-goldfinch)



Fresh,  
modern,  
open plan  
living  
space  
with Wi-Fi



Perfect  
for when  
friends or  
family  
come to  
visit

"Beautiful place to stay in quiet countryside not far from Colchester. Super clean and peaceful with super comfortable crispy bed and plenty of space in the caravan. Friendly and helpful hosts. Thank you! Review 18.06.22

Greenacres Farm, Vernons Road, Chappel CO6 2DL

Follow us on Facebook to see what else we get up to  
Search onelifeliveitGF

Bodyworks  
Chiropractic Clinic.



### Bodyworks Chiropractic Clinic Ltd

Unit 17, Wakes Hall Business Centre, Wakes Colne, Colchester, Essex, CO6 2DY

Telephone: 01787 222 435 Email: admin@bodyworks-chiropractic.co.uk

WhatsApp: 07421 354 374 Website: www.bodyworks-chiropractic.co.uk

### Promoting Health, Mobility, Strength & Flexibility

Are you experiencing joint pain, discomfort or stiffness? Muscle spasms, cramps or strains? Sports injuries or tension? General aches and pains?

We offer a range of therapeutic and holistic services, from McTimoney chiropractic, massage therapies, exercise classes, and more.



EZE School of Motoring  
www.ezelearning.uk



### Learn to drive the EZE way!

Al Jones—Driving Instructor  
(based in Mount Bures)

Offering driving lessons in all the surrounding areas.

EZE School of Motoring provides **FREE** Young Drivers Courses at both Thomas Gainsborough and Ormiston Sudbury Academies and are proud sponsors of TGS Year 12 Youth Football Team



Discount available when you quote the 'Village Reporter'

eZe Call us on  
07980 314998