

The Chappel & Wakes Colne

# Village Reporter



March to May 2024 Issue no. 120

Your free magazine for local news, information and forthcoming events in the Parishes of Wakes Colne & Chappel



Rock Choir Concert  
Sunday 9th June  
See page 2

Spring Fair  
Saturday 2nd March.  
See page 8

29th and 30th June

Celebrate 175 years of the opening of Chappel Viaduct and the Gainsborough Line between Marks Tey and Sudbury

See page 7 for details

Easter Church Services  
See page 3 and 4 for details

Photograph taken by Ray Cochram for the 2017 village calendar. 'Little Ducks on a Pond', Patricks Farm, Jupes Hill.

The Village Reporter is compiled, edited and delivered by volunteers and is wholly funded through revenue from advertisers. Anyone wishing to submit an article for publication can contact Mandy Sexton on 07729236253 or email: mandymsexton@hotmail.co.uk Press date for the June to August 2024 issue - Monday 20th May 2024



**LOCAL INFORMATION**

Earls Colne Surgery:	Appointments 01787 222022
Bures Surgery	Appointments 01787 227529
County Councillor	Lewis Barber 0787 6237137
Police Colchester Station	01245 491491 (non emerg. 101 emerg. 999)
Chappel C of E School	Head Teacher Sarah Stevenson 01787 222296
Churches: COE	Rev. Ian Scott-Thompson 01206 215772
Chappel URC	Rev. Kenneth N Forbes 01206 547920
Wakes Colne Post Office	01787 222449
National Rail Enquiries	03457 4849 50
Citizens Advice Bureau	0800 144 8848
Childline	0800 1111
Samaritans	116 123
Chappel Parish Council	Clerk: Ms. Helen Cook 01206 589095
Chappel Website	www.chappel.org
Chappel Chairperson	Cllr. Sue Chamley sue.chamley@chappel.org
Wakes Colne Parish Council	Clerk: Ms. Diane Jacob 07508787869
Wakes Colne Website	www.wakescolne.org
East Anglian Railway Museum	Peter Martin 01206 242524
Royal British Legion (Ladies)	Val Sayer 01206 240328
Women's Institute	Neris Roberts 01787 223855
Village Hall	Francesca Mead francescamead@live.com
Earls Colne & District	
Dog Training Club (Mon 7pm)	Val Sayer 07972 252987

THE UK'S ORIGINAL,  
AWARD-WINNING, LOCAL,  
CONTEMPORARY CHOIR



Comes to  
Chappel & Wakes Colne  
Village Hall

**SUNDAY 9TH JUNE 2024**  
**2.30 PM**

**Ticket ONLY event due to  
restricted numbers**  
**£10 includes  
Tea/Coffee and Cake**

Raffle tickets available on the day

Tickets  
available from

Chappel & Wakes Colne  
Village Shop  
OR contact Patrick  
01787 220147  
rushdenbeancounters  
@gmail.com



rockchoir.com  
#keepbritainsinging

raising funds for Chappel & Wakes Colne  
Village Hall CO6 2BX

**Do good**  
**Feel good**  
**Volunteer!**

Volunteer with St Helena to make your skills count and your compassion matter.

We have many volunteer opportunities available, so visit our website to find out how you can support your community today.

Visit: [www.sthelena.org.uk/volunteer](http://www.sthelena.org.uk/volunteer)  
Email: [volunteer@sthelena.org.uk](mailto:volunteer@sthelena.org.uk)



**WORMINGFORD HANDBELL RINGERS**

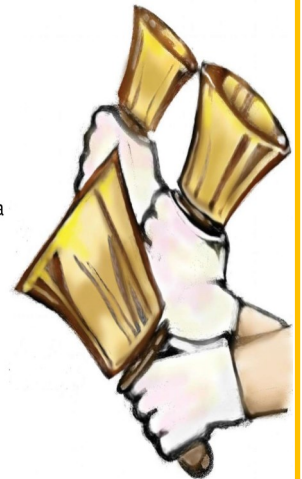
are looking for more players

Are you looking to learn to do something completely different?

We are a friendly group that meet weekly on a Thursday between 1pm-3pm in Fordham Village Hall.

Musical knowledge is not essential but you must be able to count

If you would like to find out more then call 0777481912



**GREEN PAINTING COMPANY**

**Dedicated to quality**

We deliver a first-class bespoke painting and decorating service tailored to our customers specifications. We strive to build friendly, professional working relationships to make sure we give the highest quality workmanship at realistic prices.

Contact us today for **FREE** quote

**07731 395980**

[Greenpaintingcompany@gmail.com](mailto:Greenpaintingcompany@gmail.com)



**BRITISH LEGION**

Any queries please contact Val Sayer on 01206 240328







## The Minister writes . . .

Most of the stories Jesus tells in the gospels are about the Kingdom of God. Not a place, or a time, but a way of living and relating to one another that often turns the conventions of society on their heads. It may be true that the Christian Church today is seen as old fashioned, unadventurous, and tied to belief systems, rituals, and moral and religious standards of the past, but Jesus himself was none of these things. He was a maverick, operating on the fringes of the religious establishment of his day, causing heart-searching and repentance in some people, but reactionary indignation in others.

One of his stories was about an employer who took on a number of casual workers throughout the day. Some were engaged first thing in the morning, and did a full day's work; other groups of workers were engaged at nine in the morning, midday, three o'clock and five o'clock. When the time came for the workers to be paid for their work, those who had worked for the entire day were disappointed and angry to discover that their pay was to be the same as those who had been taken on at five o'clock, and had only done an hour's work. When they complained, the employer said, 'Did you not agree with me the usual daily wage? Take what belongs to you and go; I choose to give to the last the same as I gave to you. Am I not allowed to do as I choose with what belongs to me? Or are you envious because I am generous?'

When we read this story (you will find it at the beginning of Matthew, chapter 20), our reaction may be very like the workers who

complained. It is simply not fair that the workers should be so unequally rewarded for their labour. Yet this is the Kingdom of God Jesus is talking about, and the relationships and conventions of the Kingdom are not the same as those of our society. In the Kingdom there is a difference between fairness and justice; in the Kingdom people are treated according to what they need, not what they deserve; in the Kingdom all people are loved and cared for. In the Kingdom all are treated justly, even if it sometimes seems unfair.

This parable by Jesus, like most of his stories, can be interpreted in many different ways. The above is my understanding. Read it for yourself and see what you think.

*Ken*

## Holy Week and Easter at the Chapel

**Good Friday service 11am**  
followed by hot cross buns, tea and coffee

**Easter Sunday service 6.30pm**

Both services led by the Minister the Rev'd Ken Forbes

*All welcome*

## Preachers in March, April and May

On Sundays at 6.30pm  
URC unless indicated

### MARCH

3 Rev'd Ken Forbes  
10 Rev'd Andrew Royal  
17 Colin and Grace Baldock  
24 William Glasse **Palm Sunday**  
31 Rev'd Ken Forbes **Easter Day**

### APRIL

7 Rev'd Sharon Quilter *Anglican*  
14 William Glasse  
21 Rev'd Jenny Martin  
28 Rev'd Ruth Ridge *Methodist*

### MAY

5 Canon Roy Tricker *Anglican*  
12 Rev'd Dr Martin Camroux  
19 Rev'd Ken Forbes **Pentecost**  
26 Alan MacNaught **Trinity**

## Pause for thought . . .

From a children's hymn: *Tell me the stories of Jesus, I love to hear.... Scenes by the wayside, tales of the sea. Stories of Jesus, tell them to me.*

From another hymn: *And so let Thy glory, Almighty, impart, from Christ in the story, to Christ in the heart.*

## News . . .

### A New Elder

David Tibbetts-Chaplin was ordained an Elder by Ken, our Minister in February to serve the congregation here along with elders Brian Clow and Anthony Percival

### Scrabble and Afternoon Tea

Nearly thirty people enjoyed this social event held in January at the Village Hall. Thanks to everyone who supported. Donations amounted to £161.00

### Charitable giving in 2023

amounted to £1575-00 benefiting: Christian Aid; Sight Savers; Water Aid; Beacon House; Seafarers and the Foodbank

## Monthly mid-week Activities at the Chapel

*All are welcome to join with us*

**First Wednesday 10.30am**

**Coffee and Chat**

Informal, no charge

**Second Thursday 10.30am**

**Study and Discussion Group**



St. Barnabas Church, Chappel



THE CHURCH OF ENGLAND



All Saints Church, Wakes Colne

**Rector:** Revd Ian Scott-Thompson, tel 01206 215772, email [ian.scott.thompson@gmail.com](mailto:ian.scott.thompson@gmail.com)  
**Church Warden - Chappel:** Mrs Christine Maskell, tel 01206 241261, email: [lbriar@aol.com](mailto:lbriar@aol.com)  
**Church Warden - Wakes Colne:** Nigel Impey, tel 01206 240260, email: [nigelandfiona@hotmail.co.uk](mailto:nigelandfiona@hotmail.co.uk)  
**Treasurer:** Richard Bareham, tel 07977 111817, email: [wccpcctreasurer@gmail.com](mailto:wccpcctreasurer@gmail.com)

Dear Readers,

As we are having renovation work done on the Chappel church windows, some of these dates may be subject to change at the last moment, if so we will leave a note attached to the church door to redirect you to Wakes.

**Sunday March 3rd WAKES COLNE, 10am Morning Worship Preacher Ann Bartleet**

**Sunday March 10th CHAPPEL MOTHER'S DAY 10am (a plant will be given to all ladies attending)**

**Sunday March 24th PALM SUNDAY WAKES COLNE Church 10 a.m. Preacher Rev Ian Scott-Thompson**

**MAUNDY THURSDAY March 28th School Service 9.30am CHAPPEL CHURCH**

**Friday GOOD FRIDAY service March 29th CHAPPEL CHURCH 10am**

**Sunday March 31st EASTER DAY Benefice communion GREAT TEY church 10am**

**Sunday 7th April Morning Worship CHAPPEL CHURCH 10am Preacher John Carr**

**Sunday 28th April Benefice Holy Communion CHAPPEL CHURCH 10am Preacher Christine Maskell**

**Sunday 5th May Morning Worship WAKES COLNE CHURCH 10am, also baptism of Quinn Ingram in the afternoon at Chappel church**

**Sunday 26th May Benefice Holy Communion WAKES COLNE Church 10am**

Sending you Easter blessings Christine Maskell



### Baptisms, Weddings & Funerals

Baptisms, weddings and funerals for your family can take place in Chappel and Wakes Colne Churches. You don't need to be a regular Sunday worshipper. We are your church – please ask, and we'll do our best for you!

## Memories of Living in Chappel and Wakes Colne

Last chance to tell us your memories of living in our village! The Memories project has made recordings with over 25 individuals and families of their memories of living here over the last 80 years. We have also received many donations of photos, scrapbooks of village life and other memorabilia from individuals and organisations. Thank you everyone! This is all helping to build up an amazing and detailed picture of life here over the years and many changes. The audio recordings will be lodged, through the umbrella Colchester Recalled project, with the

Chelmsford Record Office and the materials donations will be lodged with the University of Essex archive.

Our small but dedicated team is still undertaking recordings, research, analysis and typing. We want to try to complete this project in 2024. We know we still have to fix dates with several people who said they wish to talk with us. If anyone else wishes to participate please contact Monica Taylor on 01 787 223425, or speak with any other team members (Kath Beck, Kathy Brown, Jan Clark, Sarah Hopkins, Val Sayer) if you see us around.

**Monica Taylor**



## Bee Lines



So here we are at the beginning of another year, and what a poor one it has been so far.

This must be the wettest start to the year since we moved to the village some thirty years ago. In Lower Green, the pond at the junction of Bures Road has overflowed onto the road for only the third time, from memory, in all that time. The other occasions, the level returned to within the boundaries of the pond within a couple of days. This year, the water level has been lapping over the tarmac for most of the last few weeks.

When we first moved here, I recall the water level in the pond was quite high, and the pond was full of large fish, some sort of ornamental carp, I believe. We used to walk past frequently with our (then young) daughter and she loved seeing those fish. As the years went by, the surface level of the pond gradually lowered, and the fish were concentrated into an increasingly small volume of water.

Then, in a particularly dry summer, when I was frequently leaving for work around dawn, I often slowed down as I passed the pond in order to watch a grey heron slowly stalking the poor fish, trapped in the shallows of the ever-decreasing pond. By the end of that summer, the fish were gone, and I have never seen any in the pond since.

Now the level is back up to its maximum, so that should be good news for the aquatic ecosystem at least.

But what about the bees, do I hear you ask. Well, we have reached that time of year when the bees should be flying in the weak spring sunshine, and the beekeeper can take stock of his hives and get an idea of how many are likely to have survived the winter.

So, on a warm(ish) and thankfully dry, for a change, afternoon in late January I sallied forth, intent on checking my two-remaining hives, for signs of activity. The last couple of winters have seen some losses for me, and I was anxious that my remaining hives should survive, although they had seemed fine in late autumn, so I had reasons to be optimistic. Arriving at the first hive, the sign was not good, although the hive, when hefted, was heavy, indicating plenty of stores were in place. However, no bees were flying, and a heavy tap on the side of the hive, which normally would lead to bees pouring out of the hive to investigate the disturbance, failed to get a response from the inhabitants. Taking the roof off the hive and peering down through the frames revealed no sign of life. The hive was dead.

Unfortunately, on inspection the second, and last, hive revealed the exact same picture. The bees had failed, and the hive, although still heavy with stores, contained no live bees.

It is always sad when a beekeeper loses a hive, but to lose all your hives is beyond careless. Oscar Wilde would have known the feeling well.

There are various scenarios that may have caused this catastrophe. Disease is always a possibility, but the precautions and treatments I make every autumn, which have always served me well, make disease unlikely.

The hives were large going into winter, but late autumn queen failure is always a possibility. The worker bees that dominate the hive in summer are different in their structure to the bees that take the hive through winter. A failing queen in autumn will not be able to produce enough winter bees, and as the summer bees die off in autumn, there are not enough winter bees to replace them, so the hive slowly dwindles and dies out. This is the most likely cause of failure of my hives.

The other possibility is down to the weather. Bees tolerate cold very well but are susceptible to damp. Normally the hives are waterproof, but this winter has been far from normal. It is possible that the hive bodies became saturated with water, the bees inside became damp, and inevitably they would then die out.

So, for the first time in nearly a decade and a half, I can no longer refer to myself as a beekeeper. It is a strange feeling, and not a particularly pleasant one.

Where do I go from here? I am not sure, but I am considering my options, and hope to be in position to share them with you all in the next issue.

In the meantime, I hope that your year has started better than mine!

**Your bee correspondent**  
**The Old Drone**

## Chappel and Wakes Colne Cricket Club (CWCCC)

**Club AGM Friday 15<sup>th</sup> March 7pm at the Clubhouse.**

We are holding our AGM next month at the clubhouse on our ground, known as the Hobbies, on Inworth Lane. With the growth of our juniors and ladies' teams and the continued rise of our adult first team in the Two Counties leagues, we are looking to renovate and improve our clubhouse to bring it in line with England Cricket Board standards. We are also looking to convert the Club to a registered charity which will help with fundraisings. Both are big steps for our village club and as part of the village community we would like to involve as many of you as possible. The AGM is open to anyone - you don't need to be a cricket player or member to come along - and we would welcome anyone who would like to become involved or would like to support us with our plans. The bar will be open, and refreshments will be available including cakes!

**Chappel & Wakes Colne offers cricket for everyone starting from beginners aged 5 up to our senior teams.**

### Adult Cricket

We have currently have 3 adult teams; our 2 adult league sides play on Saturdays in the 2 Counties League in Divisions 4 and 8, and we also have a friendly side that plays on Sundays.

We have 2 Ladies Softball teams, who play softball cricket throughout the Summer.

If you are interested in playing or training, the men and women train up at the Hobbies on Wednesday evenings 6-8pm during the season, normally from the end of April, weather permitting! Younger people can also play in our open age sides from year 8 onwards, subject to ability.

### Juniors Cricket

We have a well-established Juniors section at the Club. We run All Stars and Dynamo Cricket for children aged 5 to 11. This is an England Cricket Board (ECB) organised initiative to introduce children to cricket and to develop their skills. As an ECB authorised club, CWCCC has been delivering these programmes for several years now. All bookings are through the ECB website; <https://www.ecb.co.uk/play/all-stars> <https://www.ecb.co.uk/play/dynamos-cricket>

We also run "Kwik Cricket", which is a softball form of cricket, for children aged 6/7 to 10. Children can play Kwik cricket as well as joining the ECB programmes above.

We run Junior hard ball cricket, suitable for children from the age of 10 up to 16 years old. We run age group teams in competitive junior leagues where children can hone their skills before moving up to our Open age group league teams.

**Juniors' registration day is Friday 26<sup>th</sup> April at 6pm – come and meet the coaches.**

**Junior's training starts on Monday 29<sup>th</sup> April at 6pm (weather permitting!)**

If you are interested in any of the teams or children's activities, then please contact Bill Maytham on 07969 277272 or Jo Johnson on 07866 261162.

If you just want to come up to the ground and enjoy watching cricket in a beautiful setting whilst enjoying our bar facilities, then please come up. We have games on almost every weekend during the season and everyone is welcome. You can find information on fixtures and the club at <https://cwc.play-cricket.com/home>





## Chappel Millennium Green

Wherever you walk on The Millennium Green, there is a sense that nature is stirring out of its period of rest. New buds and early blossom are appearing as the days begin to think about getting warmer and longer. Song birds are tuning up their voices and the Rooks near the lower pond are noisily jostling for the prime nesting sites in the tall tree canopy.

Flooding to the river bank and water meadow have almost become a permanent feature in recent weeks. Patiently holding their breath beneath the water, Snowdrops suddenly appear to brighten our days as the water subsides. The Barn Owls are active in low level flight over the water meadow, particularly in the early evening. Resting periodically in the trees and calling to each other, has to be one of the most heartwarming sounds of nature.



Winter maintenance on The Green has been as busy as ever. We are grateful to our contractor teams of Tom Leggett for tree surgery, Jack Perfect Brown (JPB) for extensive clearance of unwanted thicket etc. and Wayne Goodchild for ongoing safety repairs to the boardwalk.

You will have noticed the Community Orchard has been receiving a lot of attention over the winter period. Committee members Tony and Vicky have been cutting and raking the grass beneath the fruit trees and re-staking and guarding the trees against further damage from rabbits and deer chewing the bark. The application of wood chippings around the trees will hopefully suppress the grass.

They have been ably assisted by a team of volunteers including Helen, Deborah and Bruce, members of Vicky's family and WI members. We are grateful to all volunteers and supporters of The Millennium Green. We are currently looking for volunteers who have a particular interest in establishing and maintaining wild flower areas and also in the construction and supply of bird boxes. Please email us if you are able to help.

The 200 Club continues to generate essential funding towards the upkeep of The Green and I am pleased to announce the following winners who will each receive £40.00.  
December 23 Draw – Ticket Number 26 – Sue Howard  
January 24 Draw – Ticket Number 12 – David Murton

February 24 Draw – Ticket Number 67 – Roger & Maryanne Barron

The Draw takes place every month at the Chappel Parish Council Meeting.

Do remember, a donation of £24.00 a year will give you 12 opportunities of currently winning £40.00. This prize money is likely to increase soon as more members join the 200 Club. Our Treasurer Nick Ingram will be contacting the lucky winners and delivering their prizes. Do continue to visit and enjoy The Green and all it has to offer our community.

With Every Good Wish  
Peter Neubauer, Chairman.

Chappel Millennium Green Trust.  
Email: [chappelmillenniumgreen@gmail.com](mailto:chappelmillenniumgreen@gmail.com)

### ADVERTISING IN THE VILLAGE REPORTER Let over 500 homes know Your business!!

£65 for 1/8 of a page or £100 for 1/4 of a page, for one year (4 issues). For further information please email:  
[mandymsexton@hotmail.co.uk](mailto:mandymsexton@hotmail.co.uk)  
Thank you for supporting your local community



## Richard Fordham

Tree Surgeons Ltd



Rumps Barn  
Dowling Road  
Mount Bures  
Suffolk  
CO8 5AY

Tel: 01787 229933

Mobile: 07860 510517

Free Estimates

- Pruning of Trees, Hedges and Shrubs
- Removal of Dead / Dying / Dangerous Trees
- Stump Grinding / Removal
- Hedge Management
- Wood Chippings Delivered Locally
- Logs Delivered Locally
- Reliable and Courteous Staff



Fully Insured - £10 Million Insurance cover



## Chappel and Wakes Colne Station Adopters

Save the weekend 29<sup>th</sup> and 30<sup>th</sup> June 2024 for amazing community events to celebrate 175 years from the opening of Chappel Viaduct and the Gainsborough Line from Marks Tey to Sudbury!

At the end of January the liaison group met to discuss an exciting programme of activities they are planning to celebrate this remarkable milestone. The liaison group includes representatives from the East Anglian Railway Museum (EARM); Chappel Primary School; Chappel, Wakes Colne and Marks Tey Parish Councils; Chappel and Wakes Colne Station adopters; all the stations on the Gainsborough Line and a press adviser. The weekend of events is supported wholeheartedly by the Essex and South Suffolk Community Rail Partnership (ESSCRP) and the country wide Community Rail Partnership.

The details of the programme of events will be published nearer the weekend. Meanwhile outline plans are as follows. On Saturday 29<sup>th</sup> June, there will be a walk in the morning from Marks Tey to Chappel and Wakes Colne. The leader of the walk can trace his ancestry to Peter Bruff who designed the viaduct. In the afternoon, at 2.30pm, there will be a talk about the history of the line in the village hall. A music hall train will leave from Marks Tey at 7pm and carry out two return trips to Sudbury. Look out for when you can book tickets through the ESSCRP website.

The station adopters in Bures have designed an amazing garden which they will plant up with the help of the scouts. If you see scouts filming during activities, it is because they are making the most of the opportunities to work on their media badges. Also on Saturday 29<sup>th</sup> June Bures adopters will be holding an afternoon tea party on Bures common.

On Sunday 30<sup>th</sup> June at 1.30pm there will be an opening ceremony with special guests and the choir from Chappel Primary School at Chappel and Wakes Colne Station. The museum is hosting a village picnic with games for the children in the afternoon. There will be special arrangements for entry to the museum for local residents and children at the school.

In Sudbury on Sunday 30<sup>th</sup> June, the Director of Gainsborough House, Dr Steven Parissien, will give two talks one in the morning and one in the afternoon. The subjects of the talks are centred on The Coming of the Railways and The English Railway Station.

On both days, the EARM will be running one steam and two diesel engines. Look out for a fair organ on both days and shire horses on the Sunday. Local businesses are going to provide 'themed' menus over the weekend. Colchester Brewery will be making a special brew! Throughout June, The EARM is hosting an exhibition of Waj Mirecki's work in the engine shed.

We welcome the school's enthusiastic involvement in the celebrations. At the time of writing children are busy designing a logo for the advertising and plaque for the garden. Their art work will be on display at the museum and at a local art exhibition later in the year. The ESSCRP is applying to the Community Rail Partnership on our behalf for a grant to provide a souvenir booklet which will contain children's work. Children are keen to help plant up the anniversary garden too.

Talking of which, a lot of work is going into researching the best plants to attract bees and butterflies and resist drought. Preparation of the ground is underway. The garden area is marked out so that we do not dig where there are important cables, albeit buried deeply!

Finally, we are grateful to Handy King who is installing additional paved space beside the talking bench. This is to enable visitors with wheel chairs to sit comfortably and safely alongside their friends and family when visiting the station. Those who cannot forget the hard work necessary to plant bulbs back in October will be pleased to know daffodil shoots are emerging through the grass. Violets too are dancing in the breeze this morning. Signs that Spring is on its way.

**Kath Beck, Station Adopter**



## CHRIS EATON POSTMASTER NEW YEAR'S HONOUR AWARD!



Our special local treasure Chris Eaton, has been awarded the Medal of the Order of the British Empire (BEM) for his services to the community in Chappel and Wakes Colne.

Chris has been invited to attend a Royal Garden Party in the summer to collect his medal.

Congratulations Chris on this well deserved award. Thank you for your loyal support to all us villagers.



## Nutrition4Life

*Do you suffer from a debilitating condition?*

*Are you constantly tired & run down?*

*Do you wonder if your diet & lifestyle is making it worse?*

**Take control of your life. Personalized nutrition planning for optimum health.**

For a free 15 minute consultation please call Glynis Parker on 07754758961 or email [glynisparker@btinternet.com](mailto:glynisparker@btinternet.com)

Member of BANT and registered with the CNHC



## Chappel Primary School



On our Inset day in February we will focus on The LIFE purpose, "to build great learning communities where children flourish". The Trust has three beliefs "Courageous optimism, boundless creativity and heartfelt compassion" which are common values across all their rural Primary schools. These values help link the schools together, have proven easy for pupils to remember, and have been well-regarded at the 5 positive Ofsted inspections that LIFE had during 2023.

At Chappel we will be adopting these values and during the rest of this year we will be working with the whole school community to ensure they are understood and embedded.

This term, our two Year 5 School Ambassadors have organised and led activities for Mental Health and Wellbeing week. They have recently completed their First Aid Mental Health Training and they have led an excellent programme of events that everyone in school has had the chance to take part in.

Everyone in the school is looking forward to joining in the 175<sup>th</sup> celebrations of the Chappel Viaduct in June. The children have all been busy designing a logo for the event. We look forward to sharing in the celebrations with the rest of the local community.

**Mrs Sarah Stevenson**  
Headteacher

### Year 5 Pupils become Mental Health First Aiders

Pupils at local LIFE Education Trust primary school Chappel and affiliated primary school Langenhoe, are part of a new Trust-wide initiative to educate pupils about mental health and provide them with opportunities to take positions of responsibility to support younger students in mental health matters.

Year 5 'LIFE Ambassadors' from eight Trust primary schools and Langenhoe have recently undertaken mental health first aid training to learn; what affects our mental health, how to spot signs of being unwell and what can help.

The course is written and designed by Claire and Rachael at [Dragonfly: Impact Education](#), who support schools to promote good mental health and nurture healthy young minds, and delivered by Ceri Daniels, Executive Head of Fordham & Holy Trinity Primary Schools and a trained Senior Lead for Mental health in Schools.

The children attended 6 hours of training over 3 sessions and have completed the course in time to lead activities for [National Children's Mental Health Week](#) in each of their schools from Monday 5<sup>th</sup> February.

To launch the week, all children and adults were asked to wear yellow on the first day and the first aiders led assembly, to help raise awareness of the importance of mental health in everyone. Following this, both schools are enjoying a huge range of activities including mindful colouring and yoga sessions, discussions about friendship, a sing and dance along to their favourite songs and 'express yourself' dressing up day to embrace every child's unique personality.

One young Chappel pupil even dressed up as 'Well-Being Boy'. He brilliantly summed up the week by saying, "Positive attitudes change everything!".

The Pupil First Aiders ongoing role in school will now see them

become the 'go-to person' for anyone who is going through some form of mental health issue. They will be able to guide the student in distress to get the help that they need and also look out for or spot anyone in distress. Their role is not to fix the problem, but to support peers with self-help strategies or signposting them. They will also inform trusted adults in the school of any concerns.

Executive Head Sarah Stevenson said "We are so proud of our year 5 Ambassadors and the work they have put in to complete the course and become Mental Health First Aiders. It is a role which I feel is becoming ever more vital in schools and we hope it will benefit both the pupils who have taken on the responsibility and the children they will be supporting. In the summer term we will be writing a mental health charter for all LIFE schools to sign up to as we continue to focus our efforts on the Trust's purpose to create great learning communities where children flourish".

For more information about admissions or to book a tour of the schools, please visit the websites and contact the admin team: <https://chappel.essex.sch.uk/essex/primary/chappel>



**CRAFT & TABLE TOP SALE**  
with **POP-UP** cafe by  
**PLATFORM TWO CAFE**  
serving hot & cold food, vegetarian, vegan  
& gluten free options

**Spring FAIR**

**Jewellery \* Bric-a-Brac \* Art \* Metal & Wood Work \*  
Textile Dolls \* Knitted Characters \* Candles & Wax  
Melts \* Books \* Papercrafts \* Wool \* Haberdashery**

**Come with friends, treat yourself to  
breakfast or 11's and enjoy a browse around  
the crafts & table top items**



**Saturday**  
**2nd MARCH 2024**  
**10am - 1pm**



**Chappel & Wakes Colne  
Village Hall**

Parking Available

Limited tables still available  
call Glynis on 07754 758961  
or email [glynisparker@btinternet.com](mailto:glynisparker@btinternet.com)



## CHAPPEL & WAKES COLNE VILLAGE HALL

### 100<sup>TH</sup> COMMITTEE REPORT 20<sup>TH</sup> FEBRUARY 2024



This year we are delighted to mark the 100<sup>th</sup> Anniversary of our Village Hall.

Thanks to a very generous grant from Enovert, some grants from other sources and much hard work from our superb builder, Wayne Goodchild and his assistant Nick Browning-Smith, works to the Hall have moved apace this year.

Outside, the hall, windows, door, roof and porch have all been repaired and painted. The Village Hall sign has been refurbished and the fencing around the building has also been repaired, replaced as necessary and painted.

The new kitchen is now complete, and everyone agrees that it is fabulous. Gone is the huge ancient rusty water heater and the dividing support which held it in place leaving a long worktop the length of a much lighter and open room. This, worktop and sink, along with the worktop on the hatch side of the kitchen are now streamlined stainless steel working areas with an instant hot tap and newly painted cupboards - and behind one is a superb Bosch dishwasher. These were all made possible by a government Covid grant to increase good hygiene.

Our Enovert grant covered the painting of the whole kitchen, adding again to a light and bright working area. Chappel Parish Council kindly gave us a grant to replace the kitchen floor which, with the new refrigerator, donated by a legacy from the estate of Anne Graham, completed the works. Glynis added the finishing touches with new blinds, a clock, kettles and bins!

New LED lighting outside, in the main hall, committee room and other lighting throughout the porch, toilet areas and off stage have also improved lighting and reduced energy costs.

Next it was the turn of the Committee Room which was completely overhauled, painted and tidied up. What a pleasure it is to meet there now.

Wayne had already moved on to the front porch and toilet areas, all of which have been repainted and refurbished and look brand new.

We were fortunate to receive a s.106 grant from a new local development project which covered the sanding and resurfacing of the Hall floor which has much improved its lifespan and the appearance of the Hall. It is especially appreciated by the Tai Chi group and other exercise classes.

Enovert were extremely generous in allowing us a further grant to paint the inside of the main Hall, the bar and storage areas and as I write this, Wayne and his assistant Nick are working there now. The results are bound to be spectacular.

We are pleased to confirm that during 2023 our Village Hall was regularly used by the Chappel Parish Council and the Wakes Colne Parish Council. Courses are run by Peter Chillingworth (Art) (Glynis Parker (Tai Chi) and Rebecca Johnson (Pilates). Two bands also practise here regularly. The local W.I. group meet each month and celebrated their 75<sup>th</sup> birthday here in 2023. Our Hall is also a much-favoured venue for children's parties and other gatherings. Additionally, Patrick Dent organised a highly enjoyable and successful 'Rock Choir' in May and the Common Ground Theatre Company performed 'The Hellgate Club' in the Autumn. In November a highly enjoyable gin and spirit tasting evening was held! We are grateful for your support and thank everyone for their continued patronage.

Apart from the regular column in our Village Reporter which is delivered to all households in the two villages, we have also moved with the times. Alan Thorogood, our most excellent and valued Treasurer, organised the installation of Wi-fi and thanks to his initiative and with the help and expertise of Paul and Denise Stockwell we now have both website and Facebook pages up and running.

We are very sad to report that Keith Underwood, a very valued member of our committee for many years, died this year.

Christine Underwood has until recently been the Caretaker of our Hall

and Bookings Agent for over twelve years. She carried on as Bookings Agent in the months following the death of her husband but decided to give up this demanding role in the Autumn.

We continue to miss them both and sincerely thank them for their long and invaluable contribution to the running and upkeep of the Hall.

We have been most fortunate that Glynis Parker, a Trustee, stepped into the role of Caretaker and has made it her own by adding so many ideas and thoughtful touches that make our Hall such a special place for local people.

We take this opportunity to thank Mary McLean our long serving Trustee and Committee member, who along with husband Mac are willing and cheerful helpers whenever the need arises. Our Trustee, Val Sayer remains a much-appreciated source of ideas and ingenuity - always with the best interests of our Village Hall at heart. We also thank Trustee Sandra Blunden who, with husband Terry, chips into any job that needs doing, very often at short notice! Our thanks finally to Francis for his unfailing patience, guidance and tolerance!

It has been most heartening to have such an able and enthusiastic committee of Trustees for this our 100<sup>th</sup> year and we are optimistic that the second 100 years in the life of this historic building will prove to be even more valuable to our local community.



### GOOD NEWS!

The project so generously sponsored by Enovert has now been completed to perfection by Wayne Goodchild and his assistant Nick. We now have a magnificent Village Hall waiting to be enjoyed by everyone.

To celebrate we have a Spring Fair on **Saturday, 2<sup>nd</sup> March from 10am to 1pm**. Platform Two will be there to serve up some of your favourite food and there will be a variety of crafts, table top items and artwork for you to enjoy as you admire your new surroundings. We hope to welcome many of you to this enjoyable event.

We are also delighted to announce that there will be a Rock Concert this year on **Sunday, 9<sup>th</sup> June** with the now famous tea, cakes and raffle. It is a joyful occasion masterminded by Patrick Dent and well supported by a variety of different choir members who all give their time, travel and voices free for the benefit our Village Hall.

Other events are being planned to fund further projects as we continue with improvements to your Village Hall. Watch out for dates and details and also see our website at <https://e-voice.org.uk/Chappelandwakescolnevillagehall>

**Spring is always a good time to try something new!**

**Want to develop your artistic talents?**

Try Peter Chillingworth's art classes on Tuesdays from 1 – 4p.m.

Tel: 01206-240230.

**Thinking of Keeping Fit?**

Try Glynis Parker's Tia Chi on Tuesdays at 7p.m.

Tel: 07754-758961.

**What about our thriving Women's Institute?**

3<sup>rd</sup> Wednesday each month at 7.30p.m. See the article in this Village Reporter!

**FRANCESCA MEAD**



**Doreen Hope Carter**  
**10<sup>th</sup> June 1931 – 28<sup>th</sup> January 2024**

Mum was born on the 10<sup>th</sup> June 1931 to William and Muriel Lucas of Bakers Farm, School Road, Langham. She went to school locally and spent days at Bakers Farm helping on the smallholding where her dad grew vegetables and sold them locally around the village on a cart pulled by their pony Tommy.

As a teenager, she had her best friend Phyl to play with, by then the American Airmen were at Boxted Airfield, and many a handstand and cartwheel outside the Shepherd and Dog pub would result in a cheeky bar of chocolate.

Mum soon found her love of art; she would sit in the oak tree at the end of their field and draw the characters from the side of the American Marauder airplanes into her notebook. She would often wave to the airmen as they took off, their dare was to try and touch the wire fence at the end of the airfield with their wheels. Soon after the American's arrived, Bakers thatched cottage had to be covered with chicken wire by the Ministry to stop the thatch flying off with the planes!

Mum found herself entering a man's world, she wanted to be a draughts 'woman', following her love of drawing houses as a child. She began work as a Tracer for Raymond Erith in Dedham famous for designing 10 Downing Street. During this time, she went with friends from the office to see the Coronation in London. In 1954 she then joined the Post Office in West Stockwell Street plotting telegraph poles onto maps she would cycle the 12 miles every day. Mum met dad, (Harry Carter, local Coalman) she would go with her friend Phyl into town to go to the Cinema and would meet up with dad, Ted his brother, Ken Harvey and Roger Carter – the boys from Chappel! They later went on to watch Colchester United, dad did not like football it was not his favourite thing, but mum loved it. Mum later introduced Colchester United to Robin He is still supporting them and mum was always keen to know how they got on right up until she passed.

Mum and Dad married on 9th December 1961 at Langham Church. They managed to buy their first house – Redholme, in Lower Green, Wakes Colne it had a huge garden which they tended together, dad did the veg and mum the flowers Then along came Robin in 1963, he was an only child for a whole 7 years and then Linda was born in 1970. The years with mum and dad were simple ones, the garden was great to play in Robin soon turned the front lawn into a football pitch, cricket pitch, tennis, badminton and 18 hole putting green, the roses took a while to recover! Mum loved sport and would be out there with a tennis racket too, which later turned to swing ball with Linda. It was very hard to beat mum she was quite a tennis player then we realised the little cup that sat pride of place on the fireplace all those years actually said – Langham Tennis Club – Ladies Singles Champion 1950 this explained a lot.

In 1988 mum lost suddenly her dear husband Harry our dad it was a

tough time for us all and mum was now Mum and Dad, and she continued to carry out that role in our life until the end. She has been truly amazing during those years. Mum has always been as independent as she possible can, never asking for help. She has always taken on DIY herself, where most people would find knives and cutlery in the kitchen, there was always a drawer with a hammer, screwdriver, nails, fuse wire and so much more.

Mum found a new love of apple picking at Mr Lees Orchard in Aldham. Again, friends Phyl Harvey, Jenny Oliver, Maggie Dungey and Margaret Barret would cause as much chaos as they could with many a laugh amongst the trees.

Mum loved her annual trip to the Suffolk Show again with Phyl, Jonathan her son and Linda. The Suffolk Punch horses were certainly her favourite, we had to visit every row of animals and then head for cake in the WI Tent.

Sadly, Redholme, became too large for mum and it was time for another adventure, buying 9 Cambridge Way in Bures in 2001.

She was invigorated again, joining the art club, walking her dog around the village and countryside making new friends.

Mum adored her grandchildren, first Robin and Andrea's children Christopher and Harry, they spent many hours together at Redholme enjoying Granma's fun and creativity. She would often give them frozen chips, which were never quite cooked through! They played with sand in the front lounge making tracks with cars and tractors.

Later Linda and Wayne had Jessica and Alice, girls this time around! Both enjoying Granma's love of art. She let the girls do anything. They painted the sun house for her, they even painted butterflies and flowers on the windows too, she thought it was marvellous.

We joined together as a family for birthdays, Christmas and special trips out. We took mum to Edinburgh Tattoo in 2008, only to get to the airport to find she had not got her passport as she said Why? we are only going to Scotland, panic then set in – the only lady we know who finally flew to Edinburgh on a Bus Pass!

Mum's special Birthday approached she was 80 – we decided to take her to Jersey somewhere she had always wanted to go to. We were on the flight on the way over and we recounted - mum was only 79!! She never said a thing and had a lovely ol' time!

Even on her 90<sup>th</sup> Birthday at a family gathering at Linda's mums love of football continued as she watched England play in the World Cup on a mobile phone, and she cheered when England scored.

Mum has had a wonderful life, she has loved and laughed her way through, and it's this legacy of laughter you see continuing through her family and now on to her great grandchildren and in her own words....**I've done well.....**

Robin and Linda x

PROFESSIONAL DOG GROOMING

**PET STATION**

TEL. 07971 373790

Services provided by Rachel,  
a professional and qualified Pet Groomer  
and Veterinary Nurse with over  
20 years' experience

## SERVICES PROVIDED

- Bathing
- Clipping
- Hand stripping
- Brushing out
- Scissoring
- De-matting
- De-shedding
- Nail clipping
- Anal glands
- Puppy practice groom
- Pre-surgery bath (help reduce post-operative infections)
- Cats, Rabbits, Guinea Pigs and other small animals catered for

Please call to discuss your pet's individual needs (services listed are not exhaustive)

ALBECQ, STATION RD,  
WAKES COLNE, ESSEX, CO6 2DS



## Nature notes February 2024

A great start to the year was finally seeing Waxwings at Severalls Business Park on New Year's Day. This is a true "Waxwing Winter". Waxwings breed in northern Norway, Finland, Russia; in the winter they head southwards, and if the berry crop is poor or the winter hard, they can 'erupt' further south. That's when the UK gets flocks of these gorgeous birds.

Starling size, they have a Mohican crest, black bib, and the brown back and the black, yellow and white wing colouring is not dissimilar to a Goldfinch but with the addition of red waxy tips to the middle wing feathers. They tend to go around in flocks and look for trees and shrubs with berries on, and they frequently turn up in places like supermarket car parks where berry-bearing trees have been planted. At the last eruption some six years ago, I saw a few on the berries outside Kent Blaxills in Gosbecks Road.

A large flock of 50 or so turned up at Severalls in mid-December. I tried three times around the Christmas holiday but with no luck. Severalls at the weekends was quiet, and each time I went an innocent person might well have wondered what was going on. Cars cruising slowly up and down, small clumps of people standing around. Once I wound down the car window and a lady in a long white fur coat came over, leant on the car door and put her head inside..... No, not a negotiation, just a "no Waxwings about, darling"

On New Year's Day very early (it had been a soberish night) I decided to give it one last shot and was over at Severalls at dawn. There were twenty people already there, cameras and binoculars all pointing in the same direction. An excellent sign! Before I'd parked, I'd seen them. At least 20, flying down behind the hedge to some low berries, then flying up to a tree over the pavement to munch and poo – they do excrete a lot. I say twenty, but there may have been more, difficult to be sure as they were flying up and down constantly. By 09.00 there were more people than Waxwings around, some clearly getting up early to get a good tick for their 2024-year list. I'm not a great lister, but many have a year list, an Essex list, a UK life list, a world list.

At 09.30 the show was over when the main flock flew off and we all dispersed. Apparently, this is what this flock tended to do – breakfast on Severalls' berries then go off somewhere else. A great sight. Waiting and watching, it was all very sociable. People had come a long way to see them – the couple next to me an hour away from Canvey, others from Norfolk.

Scoters are sea ducks, and there are two which we get along out coasts in winter – Common and Velvet. Both are basically black or dark brown. Common are often seen in large groups, Velvet usually in much smaller numbers and are the rarer of the two. Even rarer is when they come to an inland water, and many people once they'd seen the Severalls Waxwings went over to Abberton to get a 2024 tick of Velvet Scoter. Just after Christmas two had turned up there and stayed for a few weeks, and the consensus was this was a female and juvenile male.

As I've seen Velvet only a couple of times before this was a must, so down to the Abberton church end of the reservoir and slipping down the muddy path to the viewing screen. A few people were coming back, a few were there watching, and more were arriving: Velvet Scoter is a draw. The key thing compared to Common is a white panel on the wing, and one obliged by standing up in the water and flapped its wings – white panel very visible.

Abberton had delivered – again. Although after the Scoter I did try for the Smew which had been reported, and failed. Overall duck numbers seemed low: lots of Goldeneye, a few Goosanders, but the big flocks were not there. Not cold enough reckoned the group watching the Scoters. As it was getting gloomy and chilly, I packed up to go, but not before a Marsh Harrier drifted over and settled in a distant tree.

**Tony Witcher**

## CHAPPEL AND WAKES COLNE WOMENS INSTITUTE

In early December four members enjoyed a lovely day in Chelmsford attending the Carol Concert in the Cathedral. Added highlights were a grand tour of the shops, lunch and the colourful Christmas lights.

Mid December was a grand gathering in the village hall for our Christmas party – what a treat it was to have so many ladies – the hall was buzzing as you can imagine fuelled by mulled wine and a wonderful buffet. Thank you to everyone's generosity with gifts and food to make the evening so enjoyable.

We welcomed the first meeting of the new year with a great attendance. The presentation was by Glynis Parker who spoke to us on Optimizing Bone Health. This is a subject dear to the hearts of us WI ladies so it was full attention all round. Glynis illustrated her talk with factual slides covering subjects from bone marrow, skeletal function, diet and exercise. The word osteoporosis means porous bone. Apparently, the condition of rickets is making a return due to the fact that our children do not spend enough time outside and therefore lack vitamin D which is so important to us. On a more scientific note, it has been found that astronauts, such as those on the International Space Station, lose 2% to 4% of bone mass per month. To compensate for this a treatment called Low Density Vibration has been developed which is much like standing on bathroom scales and emits gentle vibration through the body which increases bone density. Ten minutes a day on the machine is equivalent to 40,000 steps!

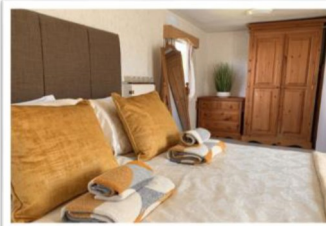
Dates for your diary:

March 20<sup>th</sup> – Pets as Therapy with Helen Beard  
April 17<sup>th</sup> – A talk on the charity DEBRA with Jim Irvine  
May 15<sup>th</sup> will be our Annual General Meeting  
June 19<sup>th</sup> – Rivers to be proud of by Andy Went.

All meetings in the village hall at 7.30. Anyone is welcome to join us – there is a charge of £5 for visitors which includes tea, coffee and homemade cakes.

**Dorothyb.crees@googlemail.com**

Check out our holiday homes on Airbnb  
[www.airbnb.com/h/greenacres-goldfinch](http://www.airbnb.com/h/greenacres-goldfinch)  
[www.airbnb.com/h/greenacres-fox](http://www.airbnb.com/h/greenacres-fox)



"The Fox is a lovely, peaceful place to stay! It is very homely, quirky, cozy and clean. Has everything you need, with the added bonus of the covered hot tub, which we could still use in the pouring rain."  
Review July 2023

Greenacres Farm, Vernons Road, Chappel CO6 2DL

Follow us on Facebook to see what else we get up to  
Search onelifeliveitGF





**Percival & COMPANY**

ESTABLISHED IN 1951, WE ARE AN INDEPENDENT FAMILY RUN FIRM OF PROPERTY PROFESSIONALS, SPECIALISING IN PROPERTY SALES, LETTINGS AND MANAGEMENT.

*Looking to Sell or Rent?  
Contact us now for a  
FREE Market Appraisal*

WWW.PERCIVALANDCOMPANY.CO.UK  
EARLSCOLNE@PERCIVALANDCOMPANY.CO.UK  
HIGH STREET, EARLS COLNE  
01787 223879

## CHAPPEL PARISH COUNCIL



### Parish Council Vacancies

We have two vacancies on the Parish Council, join and make a difference to your local community.

If you would be interested in finding out more information on becoming a Councillor, please come along to our next Parish Council meeting or contact the Clerk for further information.

### Call for Sites

The "Call for Sites" procedure in respect of the review of the Local Plan for Colchester has now closed. This provided an opportunity for members of the community and landowners to propose sites to promote land for housing, employment, offsite biodiversity net gain and green spaces.

All submitted sites, combined with any additional sites identified, will undergo a rigorous assessment through the Strategic Land Availability Assessment (SLAA) to determine their suitability, availability, and achievability. This assessment will play a crucial role in determining which sites are feasible for development over the planned period.

The Call for Sites Report and Interactive Map has been published and can be viewed: <https://colchester.oc2.uk/document/65>

Chappel Parish Council will be asked to comment on proposed sites which have been put forward within the village. If you wish to be involved and have a say please keep an eye on our Agendas to see when we will be discussing sites.

### Speed Watch Volunteer

Do you have some time to help the Speed Watch Volunteer, if so please contact the Clerk for further information.



### Parish Council Meetings

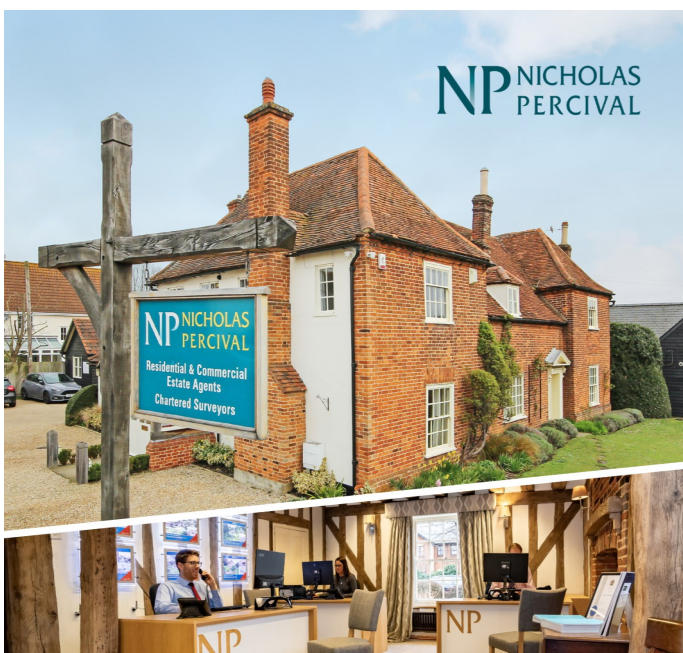
Our next meetings are due to be held on the 11<sup>th</sup> March & 15<sup>th</sup> April. These meetings will be held in the Village Hall starting at 7.30pm.

If you would like an issue raised, but would rather not attend a Public Meeting, please feel free to email the Parish Clerk.

The Agenda and Approved Minutes of all meetings are placed on the Parish Council Noticeboard and also on our Parish Council website [www.chappel.org](http://www.chappel.org)

If you have something to report and you're not sure who to report it to, please feel free to contact me and I will be happy to report the problem to the right authorities on your behalf. Please email the Parish Council with as much detail and if possible photographs to [parishclerk@chappel.org](mailto:parishclerk@chappel.org)

**Contact details:** Website: [www.chappel.org](http://www.chappel.org)  
Chappel Parish Council <https://www.facebook.com/ChappelPC/> Chairman: Sue Chamley  
Email: [sue.chamley@chappel.org](mailto:sue.chamley@chappel.org)  
Clerk: Helen Cook Email: [parishclerk@chappel.org](mailto:parishclerk@chappel.org)



Estate Agents & Chartered Surveyors **since 1986**

*An award winning service with over 35 years' of tradition and experience'*



Residential Sales & Lettings



Commercial Sales & Lettings



Land Sales & Acquisition



New Homes

01206 563222 | [info@nicholaspercival.co.uk](mailto:info@nicholaspercival.co.uk) | [www.nicholaspercival.co.uk](http://www.nicholaspercival.co.uk)

Beacon End Farmhouse, London Road, Stanway, Colchester, Essex. CO3 0NQ

## Could your roof or cupboard be saving you money?



As the snowdrops give way to primroses and daffodils on our verges, my overgrown hedges ring out with morning birdsong and bullace trees are full of blossom, have you thought about how the lengthening days could be saving you money while you save the planet by generating your own electricity?

Colne Valley Community Energy Projects (CEP) is just one of the many CEPs that are springing up around Essex, facilitated by Essex County Council, and some of our residents are already benefitting. Please read Howard Walkden's article opposite, about his experience. I already have solar panels, and I'm expecting my energy company to be paying me money, not the other way round, for the next 6 months, because my solar panels will make more electricity than I use, and I'll be selling my surplus to my energy supplier.

Gone are the days when your home had to be North/South facing, the panels are so much more efficient now that they will work on East/West facing homes too. If you would like a free survey please contact [darran@simcott.co.uk](mailto:darran@simcott.co.uk).

Most homes are suitable for solar panels, but with or without solar panels you might consider having batteries installed. They are much smaller than a microwave and can be out in a garage, shed, or anywhere in your home. If you have solar panels, batteries mean you store your own homemade electricity till you want to use it. Regardless of whether you have solar panels, you can take advantage of the cheap overnight tariffs to fill your batteries at about 9p/unit instead of the 28p/unit current price cap, then use that cheap energy from your batteries through the day.

Colne Valley CEP now have a thermal imaging camera on loan from ECC to help residents identify where heat may be escaping from their homes, if you've asked to be put on my mailing list you will have had the opportunity to use it already and will know how useful it is. Now that the weather is getting warmer it won't be as effective until we get another cold spell, but if you would like to be put on the waitlist to borrow it, or the mailing list ready to hear about any other opportunities we have, please email me.

If you'd like more information on Colne Valley CEP we have a lovely new website [colnevalleyCEP.org](http://colnevalleyCEP.org). Please take a look and drop me an email to let me know what you think of it.

Finally, with my WI hat on, I've organised another meeting on climate action. It will be chaired by the wonderful Lord Deben, who hugely impressed our audience at our Hot Debate in October. Our other confirmed speakers are Jess Ralston from ECIU, who is often interviewed on Radio 4's Today programme when they need a climate expert, and Dr Doug Parr, Chief Scientist, Greenpeace, another excellent and extremely knowledgeable speaker. We hope to also have an MP there. Tickets are £1, [www.ticketsource.co.uk/](http://www.ticketsource.co.uk/) few, and you don't need to be a member to come to this meeting. Friday 21st June, 10am-1pm, WI Centre, Hatfield Peveral.

**Jill Bruce**

**Climate Ambassador, Chappel and Wakes Colne WI  
Joint Project Lead, Colne Valley Community Energy Project  
[jillbruce321@gmail.com](mailto:jillbruce321@gmail.com), [www.colnevalleyCEP.org](http://www.colnevalleyCEP.org)**

## Reflections upon installing solar panels by Howard Walkden

I had been thinking about installing solar panels for some time and having tracked the work Jill Bruce had been doing with Essex County Council in developing a local Community Energy Project I was nudged into action. The one thing that gave me confidence was using a firm which ECC had introduced to the project, i.e. no cowboy operators. There were three main motives for installing solar panels.

1. Doing my bit for the environment by generating green power myself using my unused roof space rather than seeing panels covering productive farm fields.
2. Insulating myself against future spikes in energy prices. Given the geopolitical tensions around the global right now the risks for future spikes in prices is high in my view.
3. The investment in solar panels had to make sound commercial sense.

Installing solar panels clearly ticks boxes 1 and 2, but what about 3, the economic case?

Simcott Renewables undertook a survey of my property and designed a solar array with an 8.2kwh storage battery system. Their quote came with a financial model to forecast the payback. I use about 3,500kwh of electricity a year and the 14-panel array is expected to generate 4,813kwh of electricity annually, producing a surplus in summer which is sold to the grid and a shortfall in winter. Payback on my investment is expected to be 8 ½ years using a discount rate of 6% (which is significantly higher than you can get in a deposit account). The big variable in the financial model is future electricity prices, if prices rise above future forecasts, then my payback shortens and if lower then my payback lengthens.

The three main pieces of kit are; 1. the solar panels which come with a 25 years product and 30 years performance warrantee, 2. the inverter which has a 12 years warrantee and 3. the storage battery which has a 12 years warrantee. All warrantees being material longer than the forecast payback.

Based on this information I proceeded with the investment. Simcott Renewables took about 3 days for the installation. Most of the work is up on the roof so there was limited disruption in our house. The work done was neat and tidy, rubbish was removed and the work appeared to be well planned. The only inconveniences were scaffolding around the house and being without power for a couple of hours as they connected the solar system to the house's existing electrical system.

The system is configured as follows. Solar power first flows to the house and any surplus is used to charge the battery. Once the battery is fully charged any surplus is sold to the grid. When solar power is not being generated power is taken first from the battery and only once this has been exhausted will it draw electricity from the grid. In the winter months, I can also configure the battery so that it can be topped up during night time off peak tariff rates and released to the house during the day when tariff rates are higher. As off-peak rates are approximately 50% of daytime rates this should further shorten my investment payback period.

Whilst it's only been 6 weeks since the install, so far there have been no issues and the system is performing as forecast. Am I content with my investment decision so far – Yes. Would I recommend others to consider solar power – Yes.



## C&WC CSW UPDATE

We're pleased to advise residents of C&WC that Denise Stocker has completed the relevant CSW exercise and is now a fully-fledged CSW volunteer for both our villages.

On her first shift [learning how to operate the SDD and how recordings are made etc], a chap in a car stopped and asked Denise if she could test his eyes!!!

What had happened was that his left eye wasn't working correctly, and, he was too late to attend, and, had missed his eye test, to prove that he could still drive. Apparently he thought we were Essex Police ~ with an SDD and wearing hi-viz jackets and standing well away from the highway ~ executing a shift.

I thought Denise's answer was excellent ~ she told him (a) we weren't the Police and (b) the only thing she could confirm was .. that she could see he had two eyes!!

Denise has kindly offered to set up and run the C&WC CSW Facebook page. She will be writing an article for the Village Reporter giving all the details. Thank you Denise.

We desperately need more CSW volunteers to do shifts in the two villages to ensure (a) safety of residents and visitors and (b) to promote Safer Essex Roads Partnership, reduce deaths and serious injuries. Anyone available – once a week or once a fortnight – for an hour – to help us in our endeavours?? If so, please ring me on **01787 220 147** for more details. Thank you.

*Patrick – C&WC CSW co-ordinator*



# CSW TEAM

The Chappel and Wakes Colne volunteer Community Speed Watch was formed in June 2016 in an attempt to reduce the number of speeding motorists travelling through our two villages.



We now have a new facebook page  
**Chappel and Wakes Colne CSW**



We will be posting more content on the page as we move forward. In the meantime, we hope that you will like, follow and share our page. Many thanks.  
The CSW team



## Introducing... The quality all-in-one temperature control system

Increased comfort & smaller energy bills

**GET A QUOTE TODAY**



Not only are our systems kind to the environment, they also cost up to 75% less to run than conventional electric heating.

## Save Money on your Heating From 1kW of Electricity, Receive 4kW of Heating

Air Source Heat Pumps for Economical Heating and Cooling

- ❖ Super Quiet Fan – Ideal For The Home & Workplace
- ❖ Impeccable Service – From Initial Survey Through To Installation
- ❖ Full 5 Year Parts & Labour Warranty
- ❖ Essex Trading Standards Approved
- ❖ No Obligation Survey & Quotation
- ❖ Competitive Pricing, Friendly & Reliable

If you would like more information please contact us on 01787 220202 or email us at [info@i-ht.co.uk](mailto:info@i-ht.co.uk)

Unit 14a, Wakes Hall Business Centre, Colchester Road, Wakes Colne, Colchester, Essex, CO6 2DY [www.airconinstallation-uk.com](http://www.airconinstallation-uk.com)





**UNLIMITED TRAVEL**

Emma Coney  
Independent Travel  
Concierge

Tel: 07947 734111  
luxury@unlimitedtravel.uk

Instagram:  
Luxury\_unlimited\_travel

Long Haul • Short Haul • Corporate Travel • Villas  
Package Holidays • Weddings & Honeymoons  
Cruises • Ski Holidays • Theatre Tickets  
Excursions • UK Staycations • Flight only • car hire  
airport parking • private transfers

Estimating • Quantity Surveying & Construction  
Residential & Commercial projects undertaken • New Build  
Refurbishments • Extensions & Loft Conversions



**UNLIMITED QUANTITIES LTD**  
SURVEYING AND CONSTRUCTION SERVICES

Emma Coney  
Tel: 07947 734111  
Emma.coney@unlimitedquantities.co.uk



**Need some help  
around the house  
or garden?**

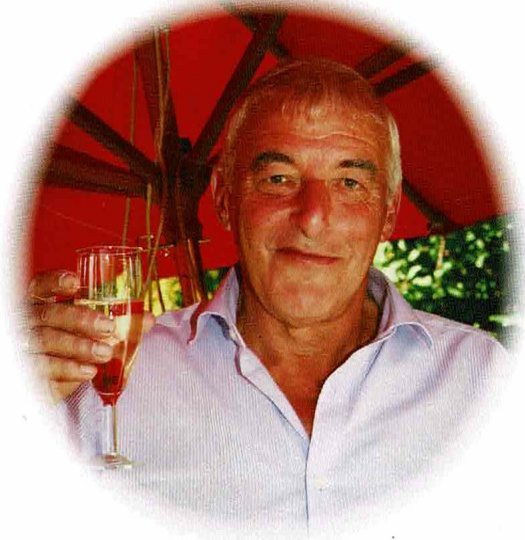
From regular gardening to that indoor job you never get around to, I could be what you're looking for. With skills in house and garden maintenance.

**Call or text me for a chat  
about your needs.**

**Graham King**  
**T: 07923 445128**

## Raymond Victor Cochram

2nd October 1945 to 30th November 2023



Ray was born in Romford and moved to Harold Hill when he married in 1969. In 1977 the family moved to Wakes Colne. Ray's first job was working as a telegram boy followed by a long career with the Post Office.

Ray was very proud of his three sons and adored his grandchildren.

(Ray often sent in photographs he had taken around the villages, into the Village Reporter. His inclusion for the 2017 village calendar is shown on the front page).

**East Anglian Railway Museum**

**Chappel Winter Beer Festival**

Thursday to Saturday 29 February to 2 March 2024

The festival is open all three days 11.00am to 11.00pm

The Chappel Winter Festival is back again for 2024. With over 70 cask ales + Ciders & Perry. Held in the Unique Chappel Goods Shed, part of the East Anglian Railway Museum at Chappel & Wakes Colne Station.

Pre-book your ticket online

<https://chappelbeerfestival.org.uk/winter/>





## Tina's Pet Dog Training

**Tina Jones - 07968 725424**  
Email: tinadogtraining@gmail.com



Check out my reviews on Facebook page @Tina's Pet Dog Training

**Outdoor Group Classes (Mount Bures)**  
- mixed class of puppies, adolescent and adult dogs

### 1-2-1 Training

- all ages - at owner's home, Mount Bures or mutually agreed venue

### Puppy advice

- pre and post puppy arrival - advice and tips especially for 1st time owners

Life Skills, learning boundaries, good manners



Based in Mount Bures

Tina is amazing! She came round today for a first introduction and wow within a few minutes she had my 16 month old puppy doing things she hasn't done since I got her. Not only that she's given me lots of pointers to work on, advice with my new pup, we have booked a 1-2-1 session and the puppy training class.

Tina has been amazing with our reactive dog Tilda. I was dreading taking Tilda to her first training session, but Tina took control and settled her in so well, I can see improvements in her training every week. It's such a lovely, friendly environment, I would recommend Tina always! Her classes are fun and relaxed, we really enjoy going. Tina loves the dogs and they all love her. She explains



## TREATMENTS OFFERED:

DIABETIC FOOT CHECKS  
FUNGAL NAILS • VERRUCAS  
ATHLETE'S FOOT  
THICKENED/ IN-GROWING TOENAILS  
NAILS CUT & FILED • HARD SKIN  
REMOVAL

FOR MORE INFORMATION OR TO BOOK, CONTACT:

**Angie Chester RGN**  
Telephone: 07801 365741  
Email: angie.rgn@outlook.com

## Specialists in quality printing & design

# B&M LIMITED

## PRINT

Stationery • Leaflets  
Magazines • Brochures  
Banners • Order of Services

T: 01245 450554 • E: Info@barham-print.co.uk  
8B Wakes Hall Business Centre, Colchester Road,  
Wakes Colne, Colchester, Essex CO6 2DY  
W: barham-print.co.uk



EZE School of Motoring  
www.ezelearning.uk



## Learn to drive the EZE way!

**Al Jones—Driving Instructor**  
(based in Mount Bures)

Offering driving lessons in all the surrounding areas.

EZE School of Motoring provides **FREE** Young Drivers Courses at both Thomas Gainsborough and Ormiston Sudbury Academies and are proud sponsors of TGS Year 12 Youth Football Team



Discount available when you quote the 'Village Reporter'.

eZe Call us on 07980 314998

# Ellisons Solicitors

## LOOKING AFTER YOUR LEGAL NEEDS



For you and your family



For your business



International Services



Ellisons Financial Planning

01206 764477

enquiries@ellisonsolicitors.com

Headgate Court, Head Street, Colchester, CO1 1NP

www.ellisonsolicitors.com

Colchester | Ipswich | Chelmsford | Bury St Edmunds | Tendring



Ellisons Legal LLP is authorised and regulated by the Solicitors Regulation Authority (SRA Number 8001031)